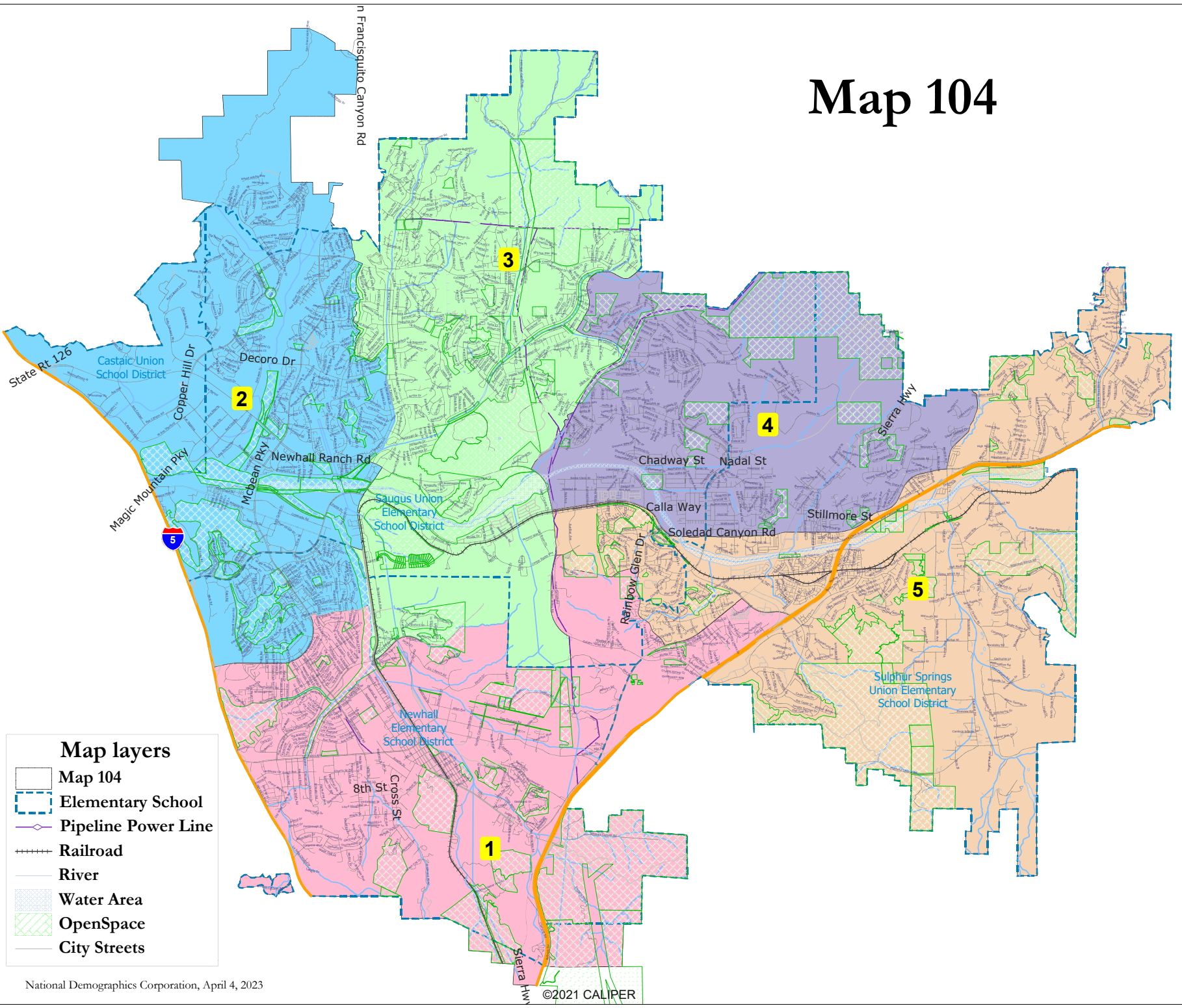


# Map 104



**Map layers**

- Map 104
- Elementary School
- Pipeline Power Line
- Railroad
- River
- Water Area
- OpenSpace
- City Streets

Map 104

District		1	2	3	4	5	Total
	Total Pop	46,670	49,618	45,568	43,752	47,690	233,298
	Deviation from ideal	10	2,958	-1,092	-2,908	1,030	5,866
	% Deviation	0.02%	6.34%	-2.34%	-6.23%	2.21%	12.57%
Total Pop	% Hisp	42.6%	20%	26%	44%	40%	34%
	% NH White	41%	52%	55%	36%	38%	44%
	% NH Black	3%	4%	4%	5%	7%	5%
	% Asian-American	10%	20%	12%	12%	13%	14%
Citizen Voting Age Pop	Total	31,208	33,840	31,385	26,041	32,484	154,959
	% Hisp	34%	19%	22%	36%	33%	29%
	% NH White	52%	57%	64%	48%	46%	54%
	% NH Black	4%	5%	4%	4%	8%	5%
	% Asian/Pac.Isl.	9%	16%	9%	10%	11%	11%
Voter Registration (Nov 2020)	Total	27,933	32,344	32,515	24,722	29,373	146,887
	% Latino est.	27%	16%	21%	34%	29%	25%
	% Spanish-Surnamed	24%	15%	19%	31%	26%	23%
	% Asian-Surnamed	3%	6%	3%	4%	4%	4%
	% Filipino-Surnamed	2%	3%	2%	2%	3%	2%
	% NH White est.	65%	71%	71%	57%	57%	65%
	% NH Black	5%	4%	4%	5%	8%	5%
Voter Turnout (Nov 2020)	Total	22,375	27,343	27,620	19,864	23,492	120,694
	% Latino est.	25%	16%	20%	33%	28%	24%
	% Spanish-Surnamed	23%	15%	19%	30%	25%	22%
	% Asian-Surnamed	3%	6%	3%	4%	4%	4%
	% Filipino-Surnamed	2%	3%	2%	2%	3%	2%
	% NH White est.	66%	71%	71%	57%	59%	66%
	% NH Black	5%	4%	4%	5%	8%	5%
Voter Turnout (Nov 2018)	Total	16,677	19,172	20,068	13,174	15,897	84,988
	% Latino est.	21%	14%	18%	29%	23%	20%
	% Spanish-Surnamed	19%	13%	17%	27%	21%	19%
	% Asian-Surnamed	3%	5%	3%	3%	3%	4%
	% Filipino-Surnamed	2%	2%	2%	2%	2%	2%
	% NH White est.	71%	74%	74%	61%	63%	69%
	% NH Black est.	5%	4%	4%	5%	8%	5%
ACS Pop. Est.	Total	48,260	48,189	45,035	39,776	50,193	231,453
Age	age0-19	30%	26%	28%	30%	29%	29%
	age20-60	53%	56%	52%	54%	53%	53%
	age60plus	17%	18%	20%	16%	18%	18%
Immigration	immigrants	21%	22%	15%	23%	24%	21%
	naturalized	54%	69%	73%	65%	61%	64%
Language spoken at home	english	61%	73%	76%	64%	61%	67%
	spanish	30%	10%	13%	25%	28%	21%
	asian-lang	5%	10%	5%	5%	5%	6%
	other lang	4%	7%	5%	6%	6%	6%
Language Fluency	Speaks Eng. "Less than Very Well"	13%	6%	5%	11%	13%	10%
Education (among those age 25+)	hs-grad	54%	44%	54%	59%	57%	53%
	bachelor	22%	34%	29%	21%	22%	26%
	graduatedegree	11%	19%	12%	9%	10%	12%
Child in Household	child-under18	38%	36%	38%	42%	40%	39%
Pct of Pop. Age 16+	employed	66%	68%	67%	69%	66%	67%
Household Income	income 0-25k	12%	8%	5%	7%	13%	9%
	income 25-50k	18%	10%	10%	13%	14%	13%
	income 50-75k	13%	10%	10%	14%	15%	12%
	income 75-200k	42%	48%	52%	50%	45%	47%
	income 200k-plus	16%	24%	21%	15%	13%	18%
Housing Stats	single family	69%	69%	92%	82%	64%	74%
	multi-family	31%	31%	8%	18%	36%	26%
	rented	39%	34%	15%	21%	35%	30%
	owned	61%	66%	85%	79%	65%	70%

Total population data from the 2020 Decennial Census.

Surname-based Voter Registration and Turnout data from the California Statewide Database.

Latino voter registration and turnout data are Spanish-surname counts adjusted using Census Population Department undercount estimates. NH White and NH Black registration and turnout counts estimated by NDC. Citizen Voting Age Pop., Age, Immigration, and other demographics from the 2017-2021 American Community Survey and Special Tabulation 5-year data.