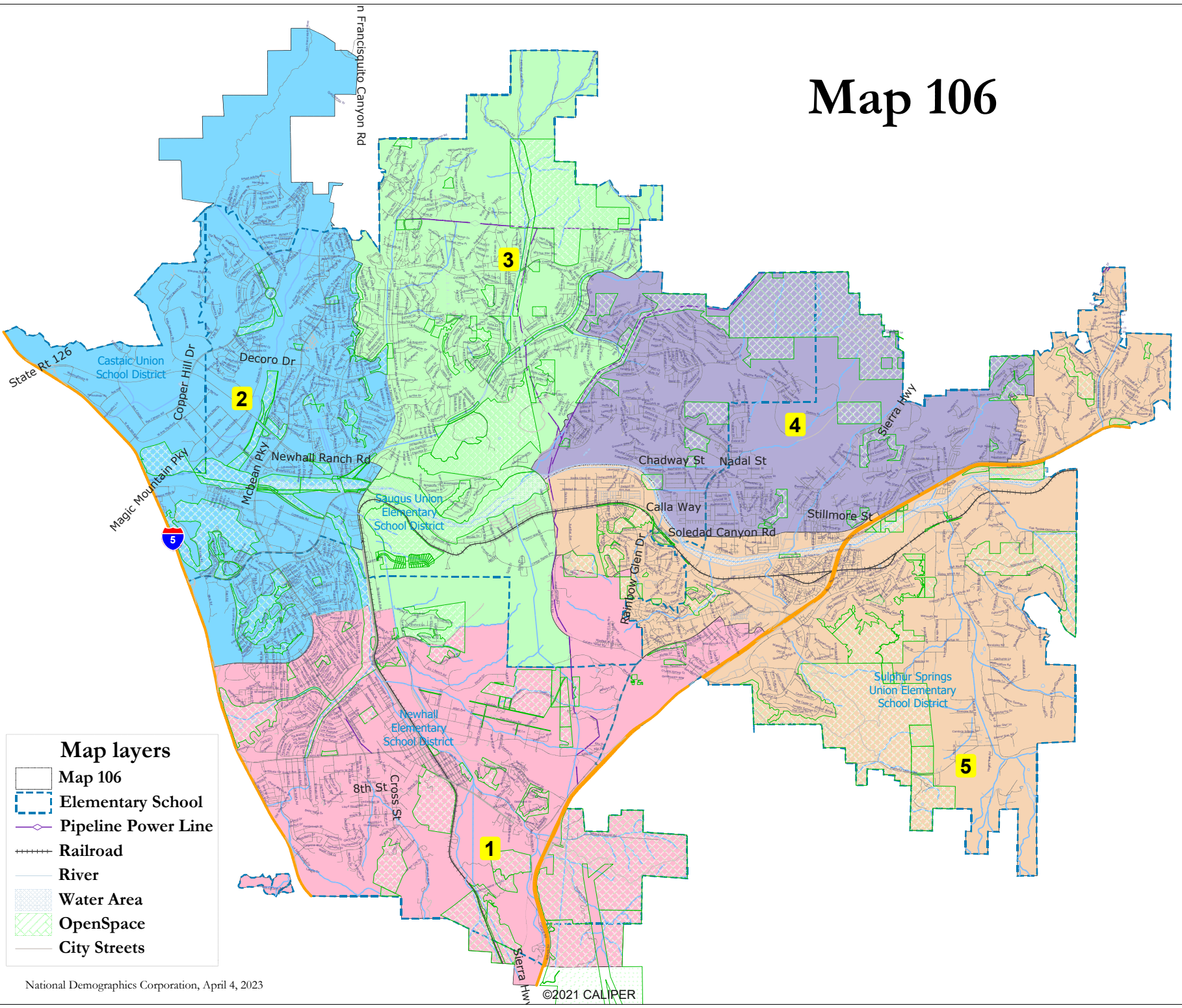


Map 106



Map layers

- Map 106
- Elementary School
- Pipeline Power Line
- Railroad
- River
- Water Area
- OpenSpace
- City Streets

National Demographics Corporation, April 4, 2023

©2021 CALPER

Map 106

District		1	2	3	4	5	Total
	Total Pop	45,207	49,618	44,753	44,713	49,007	233,298
	Deviation from ideal	-1,453	2,958	-1,907	-1,947	2,347	4,905
	% Deviation	-3.11%	6.34%	-4.09%	-4.17%	5.03%	10.51%
Total Pop	% Hisp	42.8%	20%	26%	41%	41%	34%
	% NH White	41%	52%	55%	37%	37%	44%
	% NH Black	3%	4%	4%	6%	6%	5%
	% Asian-American	10%	20%	12%	13%	13%	14%
Citizen Voting Age Pop	Total	29,972	33,840	30,831	26,848	33,468	154,959
	% Hisp	34%	19%	22%	36%	33%	29%
	% NH White	52%	57%	64%	47%	47%	54%
	% NH Black	4%	5%	4%	4%	8%	5%
	% Asian/Pac.Isl.	9%	16%	9%	11%	11%	11%
Voter Registration (Nov 2020)	Total	27,004	32,344	32,041	25,738	29,760	146,887
	% Latino est.	27%	16%	21%	33%	30%	25%
	% Spanish-Surnamed	24%	15%	19%	30%	27%	23%
	% Asian-Surnamed	3%	6%	3%	4%	4%	4%
	% Filipino-Surnamed	2%	3%	2%	2%	3%	2%
	% NH White est.	65%	71%	71%	57%	57%	65%
	% NH Black	5%	4%	4%	5%	8%	5%
Voter Turnout (Nov 2020)	Total	21,614	27,343	27,239	20,737	23,761	120,694
	% Latino est.	25%	16%	20%	32%	28%	24%
	% Spanish-Surnamed	23%	15%	19%	29%	26%	22%
	% Asian-Surnamed	3%	6%	3%	4%	4%	4%
	% Filipino-Surnamed	2%	3%	2%	2%	3%	2%
	% NH White est.	67%	71%	72%	58%	58%	66%
	% NH Black	5%	4%	4%	5%	8%	5%
Voter Turnout (Nov 2018)	Total	16,101	19,172	19,797	13,731	16,187	84,988
	% Latino est.	21%	14%	18%	28%	24%	20%
	% Spanish-Surnamed	19%	13%	17%	26%	22%	19%
	% Asian-Surnamed	3%	5%	3%	3%	3%	4%
	% Filipino-Surnamed	2%	2%	2%	2%	2%	2%
	% NH White est.	71%	74%	74%	62%	63%	69%
	% NH Black est.	5%	4%	4%	6%	8%	5%
ACS Pop. Est.	Total	46,900	48,189	44,046	41,286	51,032	231,453
Age	age0-19	31%	26%	28%	30%	29%	29%
	age20-60	52%	56%	52%	55%	53%	53%
	age60plus	17%	18%	20%	15%	18%	18%
Immigration	immigrants	21%	22%	15%	23%	24%	21%
	naturalized	53%	69%	73%	66%	61%	64%
Language spoken at home	english	61%	73%	76%	64%	61%	67%
	spanish	30%	10%	13%	24%	28%	21%
	asian-lang	5%	10%	5%	6%	5%	6%
	other lang	4%	7%	6%	6%	6%	6%
Language Fluency	Speaks Eng. "Less than Very Well"	13%	6%	5%	11%	13%	10%
Education (among those age 25+)	hs-grad	53%	44%	54%	58%	58%	53%
	bachelor	22%	34%	29%	21%	21%	26%
	graduatedegree	11%	19%	12%	10%	9%	12%
Child in Household	child-under18	38%	36%	38%	43%	40%	39%
Pct of Pop. Age 16+	employed	66%	68%	67%	69%	66%	67%
Household Income	income 0-25k	12%	8%	5%	7%	13%	9%
	income 25-50k	18%	10%	10%	13%	15%	13%
	income 50-75k	12%	10%	11%	14%	15%	12%
	income 75-200k	42%	48%	52%	51%	44%	47%
	income 200k-plus	16%	24%	21%	15%	13%	18%
Housing Stats	single family	70%	69%	92%	79%	65%	74%
	multi-family	30%	31%	8%	21%	35%	26%
	rented	41%	34%	15%	25%	31%	30%
	owned	59%	66%	85%	75%	69%	70%

Total population data from the 2020 Decennial Census.
Surname-based Voter Registration and Turnout data from the California Statewide Database.
Latino voter registration and turnout data are Spanish-surname counts adjusted using Census Population Department undercount estimates. NH White and NH Black registration and turnout counts estimated by NDC. Citizen Voting Age Pop., Age, Immigration, and other demographics from the 2017-2021 American Community Survey and Special Tabulation 5-year data.