

May 21, 2023

Changes Made in Map 113

Map 113 contains the request to unify Happy Valley in D2, the request to unify the Shangri-La HOA in District 1, the Chamber of Commerce changes (with some of the concerns raised about that map addressed with further changes mentioned below), and the three changes NDC described at the last hearing.

Map 113 also contains additional changes aimed at population balancing the map once those previous changes are made, unifying divided neighborhoods, addressing the concern about D3 being under-populated, to improve the compactness of the map, and to better follow clear visible geographic features as district boundaries.

Summary list of changes from the Joint Draft Map to Map 113:

1. Happy Valley unification
2. Shangri-La HOA unification
3. Skyline Ranch unification
4. Circle J unification
5. Hacienda Lane unification
6. Shadowbox Studios unification
7. Rye Canyon Loop unification
8. Follow Rainbow Glen vs follow Flo Lane/Fanchon Lane bump
9. Soledad Canyon vs Wash
10. Linda Vista St unification
11. Open Crest Dr / Lucy Ct cul de sac cleanup
12. Forge Court unification
13. Bridgeport Lakes into D3
14. Western Bridgeport HOAs into D3, Copper Hill etc. HOAs into D2
15. Canyon Crest HOA unification
16. Saugus Canyon HOA unification (expanding Open Crest Dr / Lucy Ct cleanup)

The new changes are detailed below. While some are too small to see in detail in the PDF map posted on the project website, all the changes are clear and easily reviewed in the interactive review map.

The image below shows the D2/D3 border in the Joint Draft Map:



And here's that border with Villa Metro area between the River/Wash and Soledad Canyon shifted into D2 (though with just this change the map is now out of population balance):



To balance the populations in the map, Map 113 extends the D2/D3 border along the River / Wash westward, moving the shopping center, Bridgeport Elementary School, and the Bridgeport Lakes neighborhood from D2 to D3. This also results in a highly compact border between D2 and D3 that also clearly follows a major visible geographic feature (note the Bridgeport Lakes area on the left, just below the “Newhall Ranch Rd” words, moves into D3):



Making that change keeps each individual HOA in the area unified, but the Bridgeport HOAs on the west side of McBean are in a different district from the Bridgeport HOAs on the east side of McBean (as shown in “partial change” below, at the end of the red arrow).

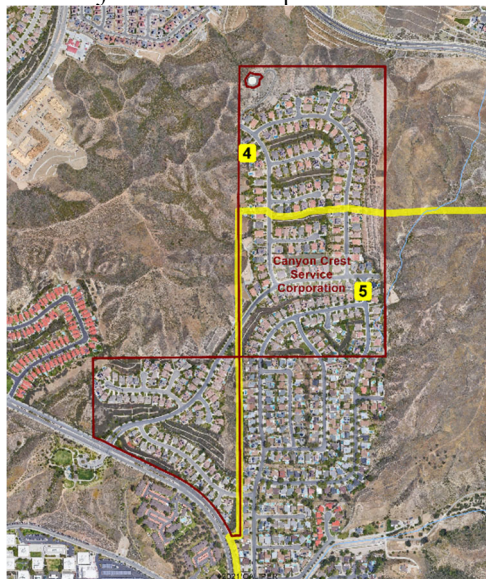
Map 113 makes two changes to keep all of the Bridgeport HOAs united: moving all the Bridgeport HOAs on both sides of McBean into District 3, and moving the Alta Vista Village, Galleria at Alta Vista, MonteVista, Copper Hill and Cornerstone HOAs into District 2:



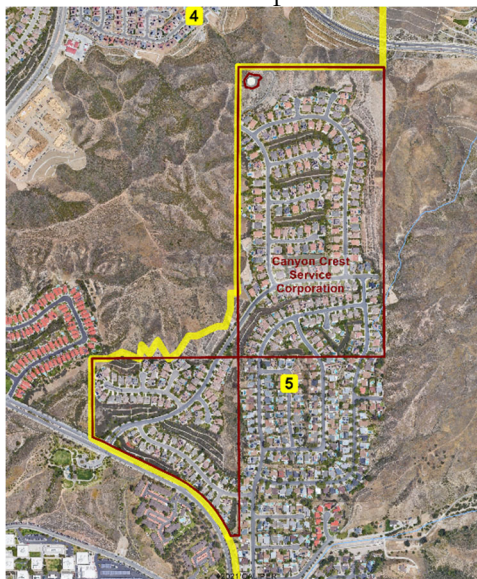
Geographically this makes sense (the wash/river and the high power line corridor already isolate them from the rest of District 3), and it addresses the under-population of District 3.

Either way, bringing the map so much closer to balance also enables us to unite a divided portion of the Canyon Crest HOA that is divided up along the D4/D5 border and the Saugus Canyon HOA along the D3/D4 border [the Saugus Canyon change is the same area as, but a larger-scale change than, the Lucy Court / Crest Drive change already made in Map 110]:

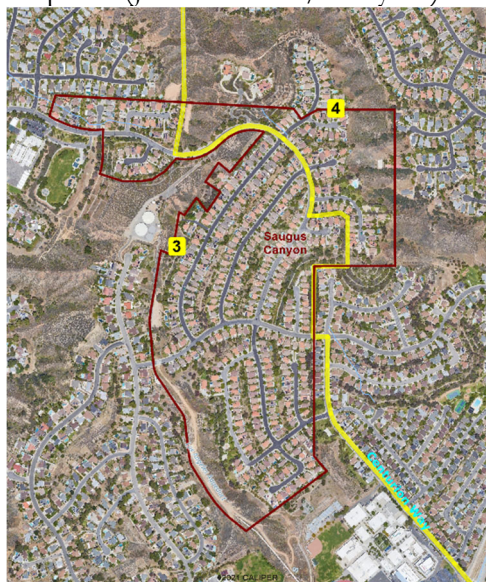
Canyon Crest HOA:
Joint Draft Map



Map 113



Saugus Canyon HOA:
Map 110 (JDM + Crest / Lucy fix)



Map 113

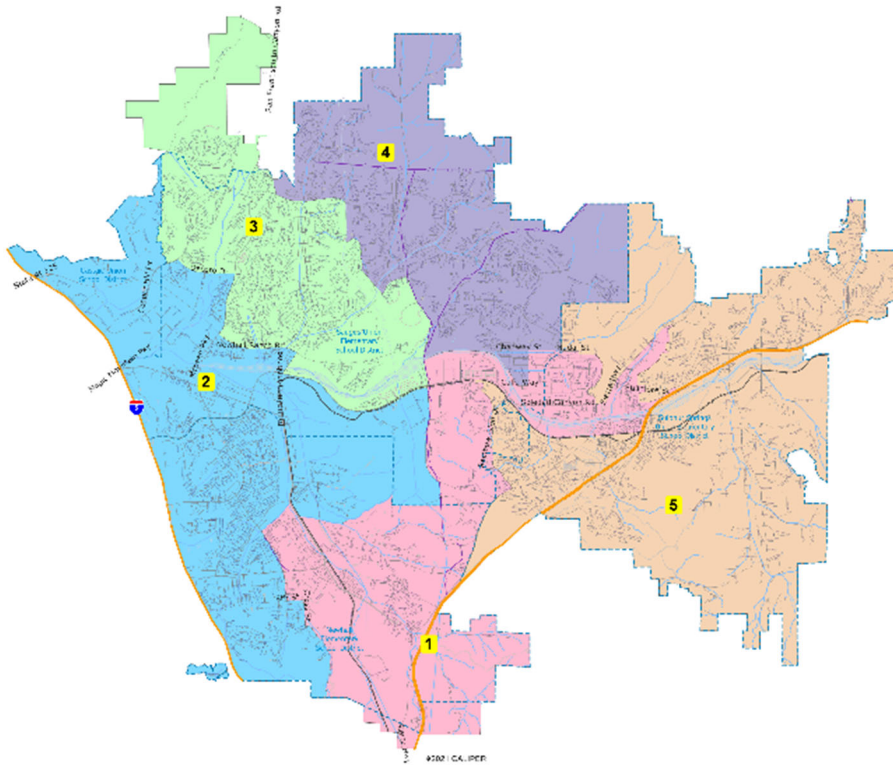


The resulting map is down to a 6.17% overall plan population deviation, which is well down from Map 110's 9.73% overall deviation.

On the next page are summary images of the Joint Draft Map and Map 113. For a more detailed view please see the interactive review map at <https://tinyurl.com/225vajph>.

Full Map Views:

Joint Draft Map



Map 113

