



City of
SANTA CLARITA

**OPEN SPACE ACQUISITION IMPLEMENTATION
WORK PROGRAM
FISCAL YEAR 2016-17**

Approved by Financial Accountability and Audit Panel: 3-29-16

Open Space Acquisition Implementation Work Program
TABLE OF CONTENTS

EXECUTIVE SUMMARY	3
WORK PROGRAM	
A. Present Challenges	5
B. Types of Undeveloped Land to be Acquired	6
C. Acquisition Principles	6
D. Acreage Allocation Ratio	7
E. Description of Land Acquisition Projects	7
F. Acquisition Work Plan	10
o Potential Open Space	
o Ranking Process	
o Applications	
G. Open Space Evaluation Process	15
o Step-by-Step Instructions	
Appendix A – Open Space Inventory Criteria (OSIC) Checklist & Definitions	
Appendix B – Open Space Preservation District Assessment Diagram	

Open Space Preservation District

EXECUTIVE SUMMARY

Background

Since the City of Santa Clarita's incorporation in 1987, the City has made a significant effort to preserve greenbelts and undeveloped land within and outside the City. This includes implementing the vision of the first and subsequent City Councils to buffer the Santa Clarita Valley with a greenbelt to help maintain the character and quality of life for residents. During the "The Big Picture" Community Strategic Planning process in 2004, several open space goals were reaffirmed. Additionally, in 2007 a number of community members spoke to the Council in support of preserving undeveloped land and asked the Council to, once again, pursue the creation of a mechanism to finance the acquisition and preservation of undeveloped land. In April 2007, the City Council adopted a resolution to initiate the formation of the City of Santa Clarita Open Space Preservation District.

Open Space Preservation District Formation

Property owners from the City voted to support the new Open Space Preservation District (the "District"), with 69 percent ballots in favor and 31 percent not in favor. The District needed a simple majority of assessment to pass, which was received. On July 17, 2007, the City Council adopted a resolution forming the City of Santa Clarita Open Space Preservation District.

The City of Santa Clarita's Open Space Preservation District represents a significant step forward in the City's ongoing efforts to acquire, preserve, and protect open space.

District Purpose

The Open Space Preservation District will expand upon the City's existing Open Space, Park, and Parkland Program ("Program").

The City already has an extensive Program for the acquisition, preservation, improvement, servicing and maintenance of parks, parkland, and open space lands. The existing program is responsible for the implementation of various functions associated with parks maintenance, park planning, and development. It provides planning and administration for the acquisition and construction of parks, open space, trails, and grounds as well as the operations and maintenance supplies to maintain the parks, facilities, trails, and open space. In addition, this program works with the community on the master plans and designs of various park facilities, and oversees the implementation of these designs by managing the construction process. Many properties outside the City's boundaries benefit from the City's existing Program.

It is the City Council's intent to use the additional funding from the District to expand the existing Program to accelerate vacant land acquisition in and around the City. The City had been doing this to some extent in previous years, but this allowed more funds to be used for this purpose.

District Funds

At the time the Open Space Preservation District was formed, in Fiscal Year 2007-08, the City's existing Parks Program budget was approximately \$6.8 million. The Open Space Preservation District was projected to increase the funds by approximately \$1.5 million, and the City Council had committed these \$1.5 million funds from the Open Space Preservation District to acquire vacant lands in and around the City, as identified in this Annual Open Space Acquisition Implementation Work Program ("Work Program").

In 2007, the City Council approved the issuance of debt to finance the acquisition of open space and parkland by executing and delivering \$15,525,000 in Certificates of Participation (Open Space and Parkland Program) 2007 Series (the "COPs"). This represented approximately half of the City's borrowing capacity and was the first bond issuance in a series of two.

As of fiscal year ending June 30, 2015, all bond proceeds have been exhausted. In FY 2014-15, \$4,403,944 in bond proceeds were used to leverage land purchases of Gateway Ranch, Taylor Property, and Aidlin Property.

Parcel Payments into the District

In 2007, a single-family residence paid \$25, which is the designated "Assessment Rate." Condominiums, townhomes, and apartments paid \$18.75 for each unit, and mobile home parks paid \$12.50 per space.

Non-residential developed property, such as commercial, industrial, and institutional land uses, paid \$75 per acre, and vacant parcels paid \$18.75 per acre up to 5 acres (not to exceed \$93.75).

The maximum Assessment Rate that can be charged may increase by \$1 each year. For FY 2015-16, the assessment rate is \$31.50. The actual Assessment Rate in any fiscal year must be approved by the City Council prior to the levy and may not exceed the maximum Assessment Rate without receiving property owner approval for the increase.

Assessment District Duration:

The assessment will be in place for thirty (30) years through Fiscal Year 2036-37.

Engineer's Report and Annual Work Program:

An Engineer's Report for the formation of this District was developed. The Engineer's Report is a legally required document, pursuant to Article XIID of the California Constitution, for assessment districts.

This document (Work Program) outlines how the open space acquisition will be accomplished, what the priorities are, etc. This Work Program provides acquisition principles, such as:

- The acquired land is within the three-mile benefit area boundary for the District (which is defined as within a 3-mile radius of the City’s existing boundary, and
- At least 90 percent of the acres purchased will be preserved for natural open space (so that no more than 10 percent of the acres purchased will be used for future improved active parkland).

WORK PROGRAM

A. PRESENT CHALLENGES

The City of Santa Clarita incorporated in 1987 and encompasses the communities of Canyon Country, Newhall, Saugus, and Valencia. Surrounding the City are various unincorporated areas and the Angeles National Forest. At the end of 2015, the City had approximately 373 acres of developed parkland, 75 miles of trails, and over 6,866 acres of City-owned open space. The City’s General Plan requires five (5) acres of active parkland per 1,000 in population. Based on this requirement, the City currently faces a deficit of over 600 acres of active parkland and continues to seek a greenbelt/buffer of preserved open space around the valley and the City.

Santa Clarita is a vibrant community. Since incorporation, the City has experienced significant growth in area and population that has impacted the relationship between open space areas and developed land. The City desires to ensure that our open space areas are protected and maintained, it recognizes that growth must be complemented with continued protection of our open spaces and the addition of parks and recreation opportunities if the area’s quality of life is to be maintained.

The City should build upon its strong history of park stewardship, development, trail construction, and open space preservation. If the City wishes to pass on to future generations of residents a community that retains the attractions that drew them here, the City must continue to protect and enhance its open space and parkland.

The City previously annexed Elsmere Canyon, and more recently annexed Haskell Canyon Open Space and areas south of the 14 freeway and west of Sand Canyon Road, including East Walker Ranch. Once areas are brought into the City, we are exempt from paying property taxes to the County.

B. TYPES OF UNDEVELOPED LAND TO BE ACQUIRED

The following category descriptions explain the variety of open space preservation actions that are needed in the City:

- *Undeveloped Land Preservation* – This effort will seek to preserve and protect the undeveloped areas around the valley and further the City’s goal to create a greenbelt/buffer around the valley and reduce sprawl.
- *Santa Clara River Watershed* – To bring the last unchanneled river in Southern California into public ownership and protect its wild, valuable habitat has long been a City goal
- *Trails* – Santa Clarita is well known for its miles of scenic and effective bike and multi-use trails which link neighborhoods to parks and open space, yet many more critical linkages remain to be added and completed.
- *Wildlife Corridors* – Protection and enhancement of the core habitat of unique, endemic, and valuable plants and animals is a critical goal.

C. ACQUISITION PRINCIPLES

The following principles are the basis for allocation categories and the criteria within each allocated category. They will also guide the implementation of this Work Program and serve as benchmarks for the Financial Accountability and Audit Panel in reviewing project expenditures.

The following principles are intended to maximize the special benefit derived from this Work Program, maintain the integrity of the Work Program, and to assure fair and equitable distribution of acreage. A land acquisition project does not need to address each of these principles to be acquired, but the consistency with principles will be considered when allocations are determined.

- 1) To acquire parcels of undeveloped land
- 2) To provide local matching funds as a way to attract state, federal, and foundation funds
- 3) To provide new methods for undeveloped land preservation, including the appropriate use of conservation easements, trails, and protection of rivers and creeks
- 4) To distribute the open space acquisition equitably in and around the City and/or the three-mile Area of Benefit boundary
- 5) To assure that new and existing undeveloped lands receive the necessary stewardship

- 6) To ensure that land that is acquired is within the three-mile benefit area boundary; this is defined as within a 3-mile radius of the City's existing boundary.
- 7) To acquire ecologically significant parcels of undeveloped land and engage in regional cooperative efforts
- 8) To acquire parcels of undeveloped land of regional importance

In addition, there are several principles that assure that the Open Space Preservation District funds will be expended in a way that complement good public policy. These will also be used by the Financial Accountability and Audit Panel to gauge the appropriateness of expenditures.

- 9) To minimize impacts and respect adjacent property owners and the values they place on their property
- 10) To rely on existing institutions to implement this Work Program, to the extent possible, so that funds are spent efficiently
- 11) To endeavor to acquire property and easements from willing sellers
- 12) To acquire parcels in a fiscally responsible manner

D. ACREAGE ALLOCATION RATIO

Funds derived from the Open Space Preservation District that are utilized for this Work Program shall fund the acquisition of acres of undeveloped land in the following ratio:

- At least 90 percent of the acres purchased will be preserved natural open space, and
- No more than 10 percent of the acres purchased will be used for future improved active parkland

E. DESCRIPTION OF LAND ACQUISITION PROJECTS

The City of Santa Clarita's 2002 Open Space Acquisition Plan, the Nature Conservancy's 2006 Santa Clara River Upper Watershed Conservation Plan, Santa Clarita River Watershed Plan, LA County SEA, South Coast Wildlands Missing Linkages, Rim-of-the-Valley studies and other relevant technical documents will be considered to prioritize properties for land acquisition.

The City of Santa Clarita's Open Space Acquisition Plan, adopted by the City Council in August 2002, established a set of guidelines and policies for bringing open space in the Santa Clarita Valley into public ownership. The primary objective defined in the Open Space Acquisition Plan is creating a greenbelt of open space around the City. The purpose of the

greenbelt is to ensure the character and natural habitat of the pristine environment surrounding the City. In addition, the Open Space Acquisition Plan also identifies finding open space within the City as a priority, not only as natural land, but as active park space as well.

During the community process that helped form the Open Space Acquisition Plan, staff was able to identify what members of the public consider open space to be. Open space was defined as vacant, undeveloped land in its natural state as well as both active and passive park space. It should be noted that in order for park space to be considered open space, the park needed to be of regional size. A small neighborhood “tot lot,” for example, would not be considered open space. However, the City’s Central Park, Newhall Park, and Canyon Country Park (to name only a few) were considered to be open space.

The Open Space Acquisition Plan’s primary function as a planning tool is to identify sites that represent the best value for the City for acquisition. This is done by a set of established and approved criteria that can be applied to any potential property. At the same time, the Open Space Acquisition Plan can be used to determine if a potential property does not represent a good value to the City. Under either circumstance, when land is acquired, the City endeavors to respect the land use for which the current terrain, topography, and environmental characteristics best represents. To establish a regional scope, the Open Space Acquisition Plan identifies five key areas in the Santa Clarita Valley that are consistent with the City Council’s direction for potential open space acquisition. These regions are:

- **Eastern Region:**
 - Approximate Area: From the 14 Freeway east to the Angeles National Forest and from the intersection of the 5/14 Freeways north to Vasquez Rocks.
 - Goals: To create a continuous strip of open space along the eastern border of the City of Santa Clarita. Connect open space between the City’s boundary and the Angeles National Forest whenever possible.
 - Status: The City has made considerable progress in the eastern region. Currently, open space property is in public ownership near the proposed Transit Mixed Concrete (Cemex) project, Whitney Canyon, and several hundred acres associated with the Golden Valley Ranch development. The City, working with the Mountains Recreation and Conservation Authority, purchased an additional 243 acres in this region in 2010, and in 2012, in partnership with Santa Monica Mountains and Los Angeles County, acquired 1,027 acres in the Eastern CAPP.

- **Southern Region:**
 - Approximate Area: From the intersection of the 5/14 Freeways north to the City of Santa Clarita boundary and between the identified eastern and western regions.

- Goals: Link natural habitat and habitat migration corridors between the eastern and western regions.
 - Status: Over 300 acres were purchased in the Southern Region in FY 2014-15. 200 acres of open space will be dedicated to the City associated with the Gate-King project. This region also contains the historic Beale's Cut property.
- Western Region:
 - Approximate Area: From the 5 Freeway to the Santa Susana Mountains Significant Ecological Area, areas around Stevenson Ranch, and from the intersection of the 5/14 Freeways north along San Francisquito Creek.
 - Goals: To create a continuous strip of open space along the western border of the City of Santa Clarita.
 - Status: Several significant properties exist in the region including the Santa Clarita Woodlands, Towsley Canyon, Mentryville, and 6,000 acres associated with the Newhall Ranch Development. Approximately 287 acres were purchased in the Western Region FY 2014-15.
- Northern Region:
 - Approximate Area: From the northern boundary of the City of Santa Clarita north to the Angeles National Forest and from the 5 Freeway/Highway 126 interchange to Vasquez Rocks.
 - Goals: To create a continuous strip of open space along the northern border of the City of Santa Clarita. Connect open space between the City of Santa Clarita and the Angeles National Forest whenever possible.
 - Status: Future development of this region should be monitored and open space dedication pursued whenever possible.
- City of Santa Clarita:
 - Area: All areas contained within the defined boundaries of the City of Santa Clarita.
 - Goals: Work with all City departments, partners, and in conjunction with the Open Space Plan; the Parks, Recreation, and Open Space Master Plan; River Features Study; and other documents to acquire and protect open space, both active and passive, within the City limits. Work in partnership with the development community to secure open space through dedication.
 - Status: To date, the City has acquired 3,015 acres of open space and another 170 acres of passive or special use parkland; and has developed 373 acres of parkland.

The regions described above cover a significant area in the Santa Clarita Valley. As a result, a considerable acreage of land must be considered and analyzed prior to deciding upon a set of properties to pursue. The Open Space Acquisition Plan, along with this Work Program, can be used as a tool to assist the City Council and planners in determining which property or properties represent the best value for the City. The land acquisition projects to be considered for funding from the Open Space Preservation District will be located within the benefit area as identified in the Engineers Report.

F. ACQUISITION WORK PLAN

Procedures to Accomplish and Implement Goals

The goals and objectives of the Open Space Acquisition Plan will be met by an objective work plan. This work plan will enable the City of Santa Clarita to evaluate and rank potential open space in the Santa Clarita Valley and maximize the limited funding and resources available for land acquisition and the Open Space Preservation District funds.

Potential Open Space

It is important to note that existing undeveloped land is not considered open space. For purposes of this plan, property will only be considered preserved open space if it is:

- In public ownership and/or;
- Appropriately zoned, designated, or identified as open space or parkland.

Properties being considered for acquisition will be considered “potential” open space until such a time that they come into public ownership and/or receive the appropriate designation or zoning.

Ranking Process

The City of Santa Clarita lacks the financial means to purchase all of the potential open space in the Santa Clarita Valley. As a result, the identification and acquisition of the most valuable pieces of potential open space becomes critically important to maximize the allocation of the City’s limited resources.

To achieve this end, an objective method of evaluation must be established to evaluate and rank each potential open space property being considered for acquisition. Ideally, those properties that present the greatest value to the City and/or Region should be acquired.

The following seven-step process will allow the City of Santa Clarita to determine which potential open space properties represent the greatest value for acquisition. This process will be applied to each parcel being considered for acquisition.

- Step One – Category of Land

Determine the category of the potential open space. There are two possible categories:

1. Inside the City of Santa Clarita
2. Outside the City of Santa Clarita and within the Open Space Preservation District's three-mile Area of Benefit boundary

Potential open space outside the City of Santa Clarita and within the three-mile Area of Benefit boundary should receive priority for acquisition because:

- Preserving land outside the City will assist in the development of a greenbelt and ecological value surrounding the Santa Clarita Valley
- More development is occurring in Los Angeles County than in the City
- Land outside the City can create corridors between the City and the Angeles National Forest
- There is more potential open space to acquire outside the City

- Step Two – Development Status

Determine the development status of the potential open space. The seven status categories are:

- A. Entitlements Pending: Development plans have been formally submitted to the City or Los Angeles County and are in the process of being considered, or plans are being prepared for submittal.
- B. Information Inquiries: The property owner has approached the City or Los Angeles County regarding the property with the intent to develop.
- C. Entitlements Approved: Plans to develop the property have been approved by the City or Los Angeles County, and an opportunity exists to acquire open space from the property owner.
- D. Amendments – when changes or amendments to the property are proposed.
- E. Boundaries – The property's boundary status has changed because of annexation, etc. The property is now within the three-mile Area of Benefit boundary.
- F. No Action: No action has been taken to develop the property on the part of the property owner, OR the owner has indicated no interest in developing the property.
- G. No Information: There is currently no information and/or the development status of the property is unknown.

Status categories are shown in order of priority, with Status A being the highest.

- Step Three – Availability Status

Determine if the owner of the potential open space property is a willing seller or would enter into agreements to have the land acquired by the City.

Priority should be given to properties with a willing seller/donor unless the acquisition of the property presents an overriding benefit to the public good. An overriding benefit to the public good would be determined by City Council.

- Step Four – Create Subcategories

The potential open space property will now fit into one of several subcategories depending on whether it is inside or outside of the City, inside the three-mile Area of Benefit boundary, and depending on its development status. Hence, each potential open space property will fall within one of the following categories:

Inside the City	Outside the City and within the Area of Benefit
Development Status A	Development Status A
Development Status B	Development Status B
Development Status C	Development Status C
Development Status D	Development Status D
Development Status E	Development Status E
Development Status F	Development Status F
Development Status G	Development Status G

Each category will have several potential open space properties within it forming a catalog of properties in each category. However, each potential open space property will not receive a relative ranking until Step 5 below.

At this time, the properties in each list should be sorted by their availability status. Those properties with willing sellers/donors should be placed at the top of the list, and those without at the bottom.

- Step Five – Apply Criteria

This step will apply the Open Space Inventory Checklist (OSIC) to each property on each list. (This step will also be the most time consuming.)

The OSIC identifies resources that the City of Santa Clarita believes to be valuable. These resources are divided into five categories: Habitat Areas; Ridgelines and Viewsheds; Recreational Resources; Cultural and Historical Resources; and Other Resources. Each category contains several elements and sub-elements. Each element and sub-element represents a specific benefit that is either present or not present at each individual property. Each element and sub-element is weighted equally.

The purpose of the OSIC is to assign numerical scores to each parcel of potential open space surveyed, based on their overall benefit to the City. Over time, as more parcels are considered, it will be possible to determine which parcels are more desirable and which are less desirable based on their relative scores.

To determine the numerical score for each property, the following steps should be followed:

1. Beginning with the Habitat Area Category, place a check in the “status” column of the OSIC for each element and/or sub-element that is present on the property.
2. Do not place a check in the “status” column in the OSIC of elements or sub-elements that do not exist on the property.
3. Apply Steps 1 and 2 to each of the remaining categories.
4. Count the number of check marks in each category and write that number in the corresponding “Category Subtotal” space.
5. Transfer the numbers from each “Category Subtotal” space to the front page of the OSIC in the spaces provided.
6. Add each of the category subtotals together and place the result on the front page of the OSIC in the space marked “Total Score.” This figure is the final numerical score of the property and will be used to establish its rank with other potential open space properties.

A copy of the Open Space Inventory Checklist and corresponding definitions is attached as Appendix A.

- Step Six – Catalog Generation

After each potential open space property has a numerical value assigned to it, each property should be listed within each category in numerical order, with the highest value at the top of each list. As indicated in Step 3, properties that do not have a willing seller/donor should be listed at the bottom of each list. The only exception to this is any property that has been identified as one whose acquisition would present significant benefit to the public good, as defined by the City Council. These properties should be listed among the properties with willing sellers/donors.

In addition, a general assessment of maintenance costs and liability of each property should be weighed at this time. All else being equal, those properties that present fewer maintenance challenges and reduced liability should be considered before those with more challenges and greater risk. Indeed, those properties that present unreasonable maintenance costs or significant risk may not be considered, regardless of their numerical score.

- Step Seven – Recommend Parcels for Acquisition

When each property has been ranked, a final catalog of the highest priority properties can be compiled by staff. A variety of methods can be used to create the final list of recommendations. This catalog will grow as more properties are considered.

- Plan Flexibility

It is important to realize that this plan is only a guide. The ultimate decision on the acquisition of property belongs to the City Council. The evolving catalog of properties to acquire will not obligate the City but will serve as a tool in the decision-making process.

The plan must be flexible enough to allow for amendments. Because development occurs rapidly and the status of land changes in a similar fashion, the plan, or parts of the plan, should be updated as needed.

An explanation of steps one through seven is explained further in Section G: Open Space Evaluation Process, Step-by-Step.

Applications

This plan can be used for a variety of applications. However, there are three major areas of implementation:

1. Dedication: Often the City of Santa Clarita is approached by developers and/or property owners who wish to dedicate all or a portion of their property to the City as open space. Although additional, natural land is needed in Santa Clarita and may present numerous opportunities, in some cases costs or liability associated with property ownership may not warrant acquisition.

In cases where the City is approached by a property owner with the intention to dedicate property, either the City can evaluate the property using the OSIC or it may be the case that the City has already evaluated the property independently. In either case, the property will receive or already have a numerical score.

In both cases, the proposed parcel will receive a score and be ranked against other potential open space in the Santa Clarita Valley. Depending on its score and rank, the City will be able to make an objective decision on whether to accept or deny the dedication.

2. Development Review Committee: Developers often propose to dedicate open space as part of the development process. The OSIC can be used by staff during the development review process to help determine whether the proposed open space meets the City's needs.

Depending on the rank given to the property using the OSIC, City staff will be able to make an objective decision about how the dedication will fit into the overall development process.

3. **Grant Writing:** There is a significant amount of grant funds available for acquisition of open space. Being able to provide an objective statement of value for any given property being sought for acquisition will help build valid justification for bringing the site into public ownership and enhance the City's ability to receive funding.

City staff applies for grants as they become available and as they meet the objectives of the City. Staff resources will be utilized to apply for available grant funds for acquisition of open space.

Over time, a substantial catalog of potential open space properties will be compiled.

G. OPEN SPACE EVALUATION PROCESS

Step-by-Step Instructions

The City's Open Space Acquisition Plan outlines the evaluation process for open space in the Santa Clarita Valley. The work plan is a series of seven steps designed to categorize and objectively determine the overall value of potential open space properties. This section includes detailed instructions for each step in the process.

1. Land Category – Determine whether the property is inside or outside of the Open Space Preservation District's three-mile Area of Benefit boundary
2. Development Status – Determine the development status of the property
3. Availability Status – Determine if the property owner is a willing seller or donor
4. Create Subcategories – Categorize the property according Steps 1-3
5. Apply Criteria – Apply criteria on the Open Space Inventory Checklist (OSIC) to the property
6. Create Final Lists – Based on the property's OSIC score, determine its relative rank within the property's sub-list from Step 4.
7. Catalog Generation – Based on the final lists in Step 6, make recommendations on whether the property should or should not be considered for acquisition. Note that recommendations should always be directed to the City Council for approval.

Step 1 – Land Category

Step 1 requires the evaluator to determine whether the property is inside or outside of the three-mile Area of Benefit boundary. This can be done by consulting the Open Space Preservation District map (Appendix B).

After Step 1 is completed, the potential property will be categorized as either “Inside the City” or “Outside the City and Within the three-mile Area of Benefit boundary.” Properties categorized as “Outside the City and Within the three-mile Area of Benefit boundary” have been identified by the City Council as higher priority than those categorized as “Inside the City and Within the three-mile Area of Benefit boundary.”

Step 2 – Development Status

Step 2 in the process is to obtain the development status of the property from the Planning Division. Provide Planning with one of the following pieces of information (listed in priority order):

1. Address
2. Location (i.e., cross streets, etc.)
3. Tentative Parcel Map or Tentative Tract Map
4. Assessors Parcel Number (APN)

Based on the results of the Development Status search, the evaluator should assign the development history to one of the following categories:

- A. Entitlements Pending: Development plans have been formally submitted to the City or Los Angeles County and are in the process of being considered, or plans are being prepared for submittal.
- B. Information Inquiries: The property owner has approached the City or Los Angeles County regarding the property with the intent to develop.
- C. Entitlements Approved: Plans to develop the property have been approved by the City or Los Angeles County, and an opportunity exists to acquire open space from the property owner.
- D. Amendments – when changes or amendments to the property are proposed.
- E. Boundaries – The property’s boundary status has changed because of annexation, etc. The property is now within the three-mile Area of Benefit boundary.
- F. No Action: No action has been taken to develop the property on the part of the property owner, OR the owner has indicated no interest in developing the property.
- G. No Information: There is currently no information and/or the development status of the property is unknown.

Development status categories are shown in priority order, with “Status A” being the highest priority.

By the end of Step 2, the property should be categorized as either “Inside the City” or “Outside the City and Within the three-mile Area of Benefit boundary” and assigned a Development Status. (To this point, a property that is “Outside the City and Within the three-mile Area of Benefit boundary” and has Development Status “A” would receive the highest priority. This will be discussed in Step 4 – Creating Subcategories.)

Step 3 – Availability Status

In this step, determine if the property owner is known to be a willing seller/donor or a non-willing seller/donor. If this is not known, it may be necessary to contact the property owner. (Contact information should be provided by Planning in Step 2.)

Priority should be given to properties with a willing seller/donor unless the acquisition of the property presents an overriding benefit to the public good, as determined by the City Council.

At the end of Step 3, the property should be categorized as “Inside the City” or “Outside the City and Within the three-mile Area of Benefit boundary,” have a development status assigned to it (A through G), and whether the property owner is a willing seller/donor.

Step 4 – Create Subcategories

By this time, the potential open space property should have been categorized as indicated above in Step 3. The first relative value judgment of that property can now be assessed and compared with other open space properties that have been evaluated.

Properties that are “Outside the City and Within the three-mile Area of Benefit boundary” and have a development status of “A” are identified as the highest priority for acquisition. Conversely, properties that are “Inside the City” with a development status of D or E are identified as the lowest priority for acquisition.

It should be noted that properties that are “Outside the City and Within the three-mile Area of Benefit boundary” with a development status of “D” or “E” may or may not be a higher acquisition priority than, for example, a property that is “Inside the City” and a development status of “A”. These instances should be considered on a case-by-case basis.

After Step 4, the property being evaluated should be placed in one of these categories:

Inside the City	Outside the City and within the Area of Benefit
Development Status A	Development Status A
Development Status B	Development Status B
Development Status C	Development Status C
Development Status D	Development Status D
Development Status E	Development Status E
Development Status F	Development Status F
Development Status G	Development Status G

Step 5 – Apply Criteria

Step 5 of the evaluation is by far the most lengthy and the most involved segment of the process.

For each property the evaluator should complete an Open Space Inventory Checklist (OSIC) form. In most cases, it will be necessary to travel to the site itself to complete the form. Accessing each property will generally require the permission of the property owner.

Steps to Complete the OSIC:

1. Provide basic property information including:
 - The Assessor's Parcel Number (APN)
 - The date(s) the evaluation was conducted
 - The initials of the evaluator
 - The availability status (willing seller/donor?)
 - A brief description of the location of the property
2. Provide basic category and development status information. Circle whether the property is inside or outside the City, and inside or outside the three-mile Area of Benefit boundary, and circle the letter that corresponds to the property's appropriate development status.
3. Evaluate each element and sub-element of each of the six inventory categories. These six categories are:
 - Habitat Areas
 - Ridgelines and Viewsheds
 - Recreational Resources
 - Cultural/Historical Resources
 - Other Resources
 - Hazard/Other Areas

To evaluate the elements and sub-elements in each inventory category, place an "X" or checkmark in the status column of each element or sub-element known to exist or observed to exist on the property. Place no marks in the status column for elements or sub-elements not known or observed to exist on the property.

For Example: If a hypothetical property being evaluated contains a wildlife migration corridor, riparian habitat, a portion of the Santa Clara River, and a known presence of the Southwestern Willow Flycatcher (to name a few), then these elements and sub-elements should each receive an "X" or checkmark in the corresponding status column. Other elements and sub-elements that are not known to be or observed to be present on the site should NOT receive a mark.

Special Instructions:

Some elements and sub-elements have special scoring instructions associated with them. In most cases, only one mark should be placed in the corresponding status column of known or observed elements and sub-elements. However, there are exceptions. These are:

- Known threatened/endangered plant and animal species: The species listed on the OSIC are those that appeared on the 2016 list provided by the California Department of Fish and Wildlife. These elements and sub-elements should always reflect the most current list of state and federally endangered and threatened species. Place only one mark in the status column for each sub-element present regardless of the population of the species. Do not place a mark in the status column for each individual of that species present on the property.
 - Ridgelines: Place a mark in the status column if there is at least one ridgeline present on the property.
 - Cultural and/or Historical Resource Areas: Place one mark in each sub-element for each site on the property. For example, a hypothetical property containing two Native American sites and two “other” archaeological sites should receive a total of four marks in the corresponding status column.
4. Score each inventory category. To complete this step, simply count all of the X’s or checkmarks for elements and sub-elements within each inventory category. Record the total number of marks for each category in the space provided in the category column. In addition, record the same figures in the spaces provided in the score summary box at the top left of the first page of the OSIC.

Note that marks in the Hazard/Other Area category are not included in the overall total. Instead, these marks are meant to be general indicators of potentially negative aspects of the property. The City may wish to reconsider acquisition of properties that contain any of the sub-elements in this category, regardless of the extent or frequency.

For Example: A hypothetical property has one primary ridgeline, the presence of secondary ridgelines, a significant “dark sky” viewshed, a significant regional viewshed, and a unique on-site visual feature yielding a total of five marks in the Ridgeline and Viewshed Category. The number “5” would be recorded in the category column and on the front page in the space provided next to “Ridgelines and Viewsheds.” The same process would be completed for each of the six inventory categories.

5. Add the inventory category scores to compute the property’s overall score. When each category score has been recorded in the spaces provided on the front page of the OSIC, the scores should be totaled (except those in the Hazards category). This is the final score of the property being evaluated.

By the end of Step 5, the property being evaluated should have a total score associated with it. The higher the score, the greater the relative value of the property to the City.

Step 6 – Catalog Generation

At this point, the property being evaluated should have the following assigned to it:

- A land category either “Inside the City” or “Outside the City and Within the three-mile Area of Benefit boundary”
- A development status of either A through G
- A total score based on criteria in the OSIC

As the catalog of open space grows, properties should be sorted according to their land category and development status. Properties of the same land category and development status should then be sorted by the score received, based on the criteria in the OSIC. A higher OSIC score represents a property of greater value. Hence, a property that is “Outside the City and Within the three-mile Area of Benefit boundary,” development status “A,” and with the highest OSIC score should theoretically represent the greatest overall value to the City for acquisition.

Note: Those properties with non-willing sellers/donors should be grouped at the bottom of subcategories, in OSIC score order.

Step 7 – Recommend Parcels for Acquisition

Based on the final set of lists, parcels that represent the greatest value for the City to acquire should be recommended. All recommendations should be directed to the City Council for final approval.

APPENDIX A

Open Space Inventory Criteria Form (OSIC)



Contents:

- **Open Space Inventory Site Checklist**
 - **Definitions**

CITY OF SANTA CLARITA OPEN SPACE INVENTORY SITE CHECKLIST



APN#: _____ Date of Entry: _____ Initials of Surveyor: _____

Site ID Number: _____ Willing Seller? YES NO Within the 3 mile Acquisition Boundary? YES NO

<p>TOTAL SCORE: _____</p> <p>Habitat: _____ Other Resources: _____</p> <p>Ridgelines and Viewsheds: _____ Hazards: _____ (Not included in total)</p> <p>Recreational Resources: _____</p> <p>Cultural/Historical Resources: _____</p>	<table style="width: 100%; border-collapse: collapse;"> <thead> <tr> <th style="text-align: center;"><u>Category</u></th> <th style="text-align: center;"><u>Development Status</u></th> </tr> </thead> <tbody> <tr> <td style="text-align: center;">Outside City & In B.A.A.*</td> <td style="text-align: center;">A Entitlements Pending</td> </tr> <tr> <td style="text-align: center;">In-City</td> <td style="text-align: center;">B Information Inquires</td> </tr> <tr> <td></td> <td style="text-align: center;">C Entitlements Approved</td> </tr> <tr> <td></td> <td style="text-align: center;">D No Action</td> </tr> <tr> <td></td> <td style="text-align: center;">E No Information</td> </tr> </tbody> </table>	<u>Category</u>	<u>Development Status</u>	Outside City & In B.A.A.*	A Entitlements Pending	In-City	B Information Inquires		C Entitlements Approved		D No Action		E No Information
<u>Category</u>	<u>Development Status</u>												
Outside City & In B.A.A.*	A Entitlements Pending												
In-City	B Information Inquires												
	C Entitlements Approved												
	D No Action												
	E No Information												

* (Benefit Assessment Area)

CATEGORY	ELEMENT	SUB ELEMENT	STATUS	
Habitat Areas	Wildlife migration corridor	None		
	Category Subtotal: _____	Riparian habitat	None	
		Contains part of a Significant Ecological Area (SEA) (General Plan Open Space and Conservation Element)	Elsmere/Whitney/Placerita Canyon	
			Lyon Canyon	
			San Francisquito Canyon	
			Santa Clara River Corridor	
			Santa Susana Mountains	
			Valley Oaks Savanna	
Contains a block of known undisturbed critical habitat	None			

CATEGORY	ELEMENT	SUB ELEMENT	STATUS
Habitat Areas (Continued)	Contains one of the seven identified major plant communities (General Plan Open Space and Conservation Element)	Coast Live Oak Woodland	
		Forest	
		Interior Live Oak Woodland	
		Mulefat Scrub	
		Riversidean Sage Scrub	
		Semi-Desert Chaparral	
		Southern Cottonwood-Willow Riparian	
		Valley Oak Woodland	
	Contains land within an identified important canyon area (General Plan Open Space and Conservation Element)	East Canyon	
		Elsmere Canyon	
		Placerita Canyon	
		Rice Canyon	
		San Francisquito Canyon	
		Towsley Canyon	
		Whitney Canyon	
		Wiley Canyon	
	Contains rivers or creeks	"Other" canyon	
		Bouquet Creek	
		Newhall Creek	
		Other creek/tributary	
		Placerita Creek	
		San Francisquito Creek	
		Sand Canyon Creek	
		Santa Clara River	
	South Fork of the Santa Clara River		

CATEGORY	ELEMENT	SUB ELEMENT	STATUS
Habitat Areas (Continued)	Contains known endangered or threatened animal species (pursuant to most recent list of state and federal species. Those shown at left are reflective of April, 2016 - California Fish and Wildlife)	California Condor	
		California Red-Legged Frog	
		Coastal California Gnatcatcher	
		Least Bells Vireo	
		Quino Checkerspot Butterfly	
		Riverside Fairy Shrimp	
		Santa Ana Sucker	
		Southern Mountain Yellow-Legged Frog	
		Southern Rubber Boa	
		Southwestern Arroyo Toad	
		Southwestern Willow Flycatcher	
		Swainson's Hawk	
		Townsend's Big-Eared Bat	
		Unarmored Three-Spined Stickleback	
		Western Yellow-Billed Cuckoo	
		Willow Flycatcher	
Other			
	Contains known endangered or threatened plant species (pursuant to most recent list of state and federal species. Those shown at left are reflective of April, 2016 - California Fish and Wildlife)	California Orcutt Grass	
		Nevin's Barberry	
		San Fernando Valley Spineflower	
		Slender-Horned Spineflower	
		Spreading Navarretia	
		Other	

CATEGORY	ELEMENT	SUB ELEMENT	STATUS
Habitat Areas (Continued)	Contains oak trees	Heritage Oak	
		Non-Heritage Oak	
		Oak Forest	
		Oak Savanna	
		Oak Woodlands	
Ridgelines and Viewsheds	Contains identified ridgelines	Primary ridgelines	
		Secondary ridgelines	
Category Subtotal: _____	Contains visual resources	"Dark Sky" viewshed	
		Significant local viewshed	
		Significant regional viewshed	
		Unique or special visual features on-site	
		Site visible from public right of way	
Recreational Resources	Contains passive recreation areas	Existing pedestrian trail	
		Connection to existing offsite trails	
Category Subtotal: _____		Existing equestrian trail	
		Existing mixed-use trail	
		Other passive recreation resource	
		Potential equestrian trail	
		Potential mixed-use trail	
		Potential pedestrian trail	
Cultural/Historical Resources	Contains cultural and/or historical resource areas	National Register of Historic Places	
		State significant historic landmark	
Category Subtotal: _____		Local significant historic resource	
		Native American site	
		Other archaeological site/resource	

CATEGORY	ELEMENT	SUB ELEMENT	STATUS
Other Resources Category Subtotal: _____	Contains a groundwater recharge area	None	
	Is in a significant location	Abuts existing open space	
		Expands a regional open space corridor	
		Located in a parks/open space poor area	
		Potential buffer zone	
		Provides links to existing or future trail systems	
	Access to site	Existing equestrian access	
		Existing pedestrian access	
		Existing vehicular access	
		Provides access to other sites	
	Conservation Easement Utility Easement or other Easement	None	

Hazard/Other Areas: Total Score: _____ (Not included in total)	Contains hazards rendering the site undevelopable	Areas of soil instability	
		Fault zone	
		Fire hazard areas	
		Floodway	
		Mineral resource area	
		Site is Contaminated	

Notes:

DGP:srl

S:\FINMA\OSPD\Work Program\2016 Work Program\OpenSpace Inventory Checklist 2016.xls

Open Space Inventory Items – Definitions

TERM	DEFINITION
<ul style="list-style-type: none"> • <u>Wildlife Corridor</u> 	<p>Wildlife corridors are generally described as pathways or habitat linkages that connect discrete areas of natural open space otherwise separated or fragmented by topography, changes in vegetation, and other natural factors in combination with urbanization. Corridors: 1) allow animals to move between remaining habitats, which allow depleted populations to be replenished and promotes genetic exchange; 2) provide escape routes from fire, predators, and human disturbances, thus reducing the risk that catastrophic events, such as fire or disease, will result in population or species extinction; 3) serve as travel paths for individual animals as they wander throughout their home ranges in search of food, water, mates, and other needs, or for dispersing juveniles in search of new home ranges.</p>
<ul style="list-style-type: none"> • <u>Riparian Habitat</u> 	<p>Specifically referring to habitat located on the banks of or within a natural watercourse, including rivers, lakes, and tidewaters. These corridors are generally defined by a blue-line stream designation on United States Geologic Survey maps. In Santa Clarita, the riparian habitat of the Santa Clara River is home to several Federal and State Endangered Species, including, but not limited to: the Unarmored Three-spine Stickleback, the Southwestern Arroyo Toad, and the Least Bells Vireo. In addition to being important breeding grounds for a variety of species, riparian habitat also protect water quality by reducing runoff and allowing for groundwater recharge.</p>
<ul style="list-style-type: none"> • <u>Significant Ecological Areas</u> 	<p>Areas that contain significant or special biological resource value. Los Angeles County has designated five SEA's in and around the City of Santa Clarita. They are 1) The Santa Clara River Corridor, 2) The Santa Susana Mountains, 3) San Francisquito Canyon, 4) Lyon Canyon, and 5) Valley Oaks Savanna. In addition, the City has recommended that sections of Elsmere Canyon, Whitney Canyon, Placerita Canyon, Los Pinetos Canyon, and Los Pinetos Spring be included as SEA's by Los Angeles County. Generally, the SEA designation provides protection and special development standards designed to protect the significant or special biological resources contained within them.</p>

<ul style="list-style-type: none"> • <u>Critical Habitat</u> • <u>Major Plant Communities</u> • <u>Important Canyon Areas</u> • <u>Rivers and Creeks</u> 	<p>The specific areas within a geographical area, occupied by an endangered/threatened species, on which are found those physical or biological features essential to the conservation of the species and which may require special management, consideration, or protection.</p> <p>The Open Space and Conservation Element of the General Plan identifies seven major plant communities in the Santa Clarita Valley. They are: 1) Interior Live Oak Woodland, 2) Valley Oak Woodland, 3) Coast Live Oak Woodland, 4) Riversidean Sage Scrub, 5) Semi-Desert Chaparral, 6) Southern Cottonwood-Willow Riparian Forest, and 7) Mulefat Scrub.</p> <p>The Open Space and Conservation Element of the General Plan identifies the following canyons as important for their habitat and biological resources: Whitney Canyon, Elsmere Canyon, Wiley Canyon, East Canyon, Towsley Canyon, Rice Canyon, San Francisquito Canyon, Placerita Canyon, and “other” canyons that provide important habitat (water, food, and shelter) and biological resources, in addition to adding to the viewshed of the Santa Clarita Valley.</p> <p>Rivers and creeks in Santa Clarita (most notably the Santa Clara River) support a variety of natural habitats, including freshwater marsh, coastal sage scrub, oak woodlands, and riparian woodlands. Many of the rivers and creeks in Santa Clarita remain dry for most of the year, although a subsurface flow runs year round. In scattered areas, however, the water table under the streambed is high, and lush riparian vegetation provides refuge for birds and wildlife.</p> <p>The assemblage of vegetation is unlike that found in steeper mountain canyons and is rare in the Los Angeles Basin. The Santa Clara River is the only major drainage from the San Gabriel Mountains and remains unchannelized for most of its length.</p> <p>Wetlands found along the Santa Clara River and its tributaries are considered a sensitive resource by the California Department of Fish and Game and are subject to the Clean Water Act, under the jurisdiction of the U.S. Army Corps of Engineers.</p>
--	---

<ul style="list-style-type: none"> • <u>Known Endangered and Threatened Animal Species</u> • <u>Known Endangered and Threatened Plant Species</u> • <u>Oak Trees</u> 	<p>The following species can be found in the Santa Clarita Valley, according to the California Fish and Wildlife List of State and Federally Endangered and Threatened Animal Species, April 2016: California Condor (FE, SE), California Red-Legged Frog (FT), Coastal Gnatcatcher (FT), Least Bells Vireo (FE, SE), Quino Checkerspot Butterfly (FE), Riverside Fairy Shrimp (FT), Santa Ana Sucker (FT), Southern Mountain Yellow-Legged Frog (FE, SE), Southern Rubber Boa (ST), Southwestern Arroyo Toad (FE), Southwestern Willow Flycatcher (FE, SE), Swainson’s Hawk (ST), Townsend’s Big-Eared Bat (SCT), Unarmored Three-Spined Stickleback (FE, SE), Western Yellow-Billed Cuckoo (FT, SE), and the Willow Flycatcher (SE).¹</p> <p>The following species can be found in the Santa Clarita Valley, according to the California Fish and Wildlife List of State and Federally Endangered and Threatened Plant Species, April 2016: California Orcutt Grass (FE, SE), Nevin’s Barberry (FE, SE), San Fernando Valley Spineflower (SE), Slender-Horned Spineflower (FE, SE), and the Spreading Navarretia (FT).</p> <p>Heritage Oak Tree: Any oak tree of the genus <i>Quercus</i> including, but not limited to, Valley Oak, California Live Oak, Interior Live Oak, Canyon Oak, and Scrub Oak, measuring one-hundred-eight (108) inches or more in circumference or, in the case of multiple trunk oak trees, two (2) or more trunks measuring seventy-two (72) inches each or greater in circumference measured four-and-one-half (4 ½) feet above the natural grade surrounding such a tree. In addition, a Heritage Oak is defined as any oak tree specifically classified as such by the Planning Commission and/or City Council when the tree possess exceptional historic, aesthetic, and/or environmental qualities of major significance or prominence to the community.</p> <p>Non-Heritage Oak Tree: Any oak tree not fitting the description of a Heritage Oak tree (above) of the genus <i>Quercus</i> including, but not limited to, Valley Oak, California Live Oak, Interior Live Oak, Canyon Oak, and Scrub Oak.</p>
---	--

¹ Where FE = Federally Endangered, FT = Federally Threatened, SE = State Endangered, ST = State Threatened, and SCT = State Candidate Threatened

<ul style="list-style-type: none"> • <u>Ridgelines</u> 	<p>Structural Types: Oak trees are generally grouped into one of three structural types: Oak Savannas, Oak Woodlands, and Oak Forests.</p> <p>Oak Savanna: Of the three structural types, an Oak Savanna is the most spacious with oak trees scattered far apart from each other over the landscape. Generally, Oak Savannas are found in the driest and warmest environments at the lowest elevations of the three oak structural types.</p> <p>Oak Woodland: Of the three structural types, Oak Woodlands have a greater tree density than Oak Savannas but are less dense than an Oak Forest. Individual oak canopies may touch, but rarely overlap those of other oak trees. Oak Woodlands are generally found in higher elevations and in cooler, moister, environments than Oak Savannas, but less than in Oak Forests.</p> <p>Oak Forest: Oak Forests are characterized by deep, overlapping canopies that produce constant shade. Forests are generally associated with upland slopes, or with streams and rivers at any elevation where the environment is very moist and relatively cool.</p> <p>Ridgelines: Ridgelines that surround or visually dominate the valley landscape, either through their size in relation to the hillside or mountain terrain, of which they are a part; their visual dominance, as characterized by a silhouetting appearance against the sky; as a significant natural backdrop feature or separation of communities; through visual dominance, due to proximity and view from existing development or major corridors; or as an area of significant ecological, historical, or cultural importance, such as those which connect park or trail systems.</p> <p>Ridgelines are those which are characterized by any condition of significant ridgeline criteria.</p>
---	---

<ul style="list-style-type: none"> • <u>Viewsheds</u> 	<p>Natural and cultural features of the environment that can be viewed by either stationary or transitory populations. Prominent visual features can be further identified as features that are unique to the Santa Clarita Valley and/or those that stand out in relation to their surroundings.</p> <p>Significant Regional Viewshed: A viewshed where a significant number of prominent visual features unique to the Santa Clarita Valley can be identified.</p> <p>Significant Local Viewshed: A viewshed where a significant number of prominent visual features unique to the Santa Clarita Valley or the City of Santa Clarita can be identified, but that are secondary in quantity or nature to a Significant Regional Viewshed.</p> <p>“Dark Sky” Viewshed: A location away from artificial or urban light sources, which preserves the nighttime view of stars, planets, constellations, and other heavenly bodies.</p> <p>Unique or Special Visual Resources: Unique or special scenic elements on-site, such as waterfalls, wildflower displays, geologic formations, scenic vistas, etc.</p>
<ul style="list-style-type: none"> • <u>Trails</u> 	<p>Existing Trails: A trail of any class which has been established and is currently being maintained.</p> <p>Potential Trails: A location where developing trailheads or trails on the site is feasible.</p> <p>Other Passive Recreation Resources: The potential for the development of other types of passive recreation on-site.</p>

<ul style="list-style-type: none"> • <u>Cultural/Historical Resources</u> 	<p>A variety of classifications of Cultural/Historical sites exist:</p> <p>National Register of Historic Places: The National Register of Historic Places is the Nation's official list of cultural resources worthy of preservation. Authorized under the National Historic Preservation Act of 1966, the National Register is part of a national program to coordinate and support public and private efforts to identify, evaluate, and protect our historic and archeological resources. At the time this document was published, the Santa Clarita Valley contained no known sites of this kind.</p> <p>State Significant Historic Landmarks: Properties of historical importance in California are designated as significant resources in three state registration programs: State Historical Landmarks, Points of Historical Interest, and the California Register of Historic Places. Historical landmarks are sites, buildings, features, or events that are of statewide significance and have anthropological, cultural, military, political, architectural, economic, scientific, technical, religious, experimental, or other value. At the time this document was published, Santa Clarita contained nine State Historical Landmarks and over twenty State and City Points of Historical Interest. State Historical Landmarks are: #1006 - Beale's Cut, #168 - The Oak of the Golden Dream, #172 - Pioneer Oil Refinery, #516 - Well CSO4 (Pico 4), #516-2 - Mentryville, #556 - Rancho San Francisco, #590 - Lang Station, #688 - Lyons Station Stagecoach Stop, and #919 - The St. Francis Dam Disaster Site.</p> <p>Native American Sites: Archaeological evidence suggests no fewer than twenty-two semi-permanent villages throughout the Valley settled by the Tataviam Indians, circa 550 A.D., during their migration westward from the interior. It is estimated that approximately 500 Tataviam lived in these villages at that time.</p> <p>Other Archaeological Site/Historical Resource: Other archaeological or historical resources not mentioned above.</p>
--	---

<ul style="list-style-type: none"> • <u>Groundwater Recharge Area</u> • <u>Conservation Easement</u> • <u>Significant Location</u> 	<p>Areas that provide for the replenishment of underground water resources, specifically the Saugus and alluvial aquifers. Primary groundwater recharge areas within the Santa Clarita Valley include, but are not limited to, the Santa Clara River and its tributaries and local canyons. Generally, natural or soft-bottom drainage channels and wide, natural floodways and floodplains also serve as groundwater recharge areas.</p> <p>In granting a conservation easement, a landowner transfers certain property rights to a nonprofit conservation organization or government agency. The landowner agrees to restrict uses of the property, and the agency or nonprofit gains the right to ensure that the restrictions are upheld. Serves as a tool for preventing intensification of land use on property having important natural, agricultural, scenic, or historical value. The landowner retains title to the property but agrees to forgo certain uses, including, but not limited to, residential and/or commercial development. Explicit and legally binding, but negotiable, so that the needs of all parties involved can be accommodated. Uses are restricted only to the degree necessary to protect the land's significant values. Conservation easements are written into the deed for the property and run with the land. All subsequent property owners are bound by the terms of the easement. (Source: California Wetlands Information System.)</p> <p>The site is significantly located in relation to other sites and/or resources:</p> <p>Potential Buffer Zone: The location provides a buffer zone between more intensive and less intensive uses.</p> <p>Abuts Existing Open Space: The location abuts existing open space areas.</p> <p>Located in a Parks/Open Space Poor Area: The location is in a part of the Santa Clarita Valley that is poor in open space and/or park space. These areas tend to be those that have the greatest urban density, such as, Newhall and Canyon Country.</p>
---	---

<ul style="list-style-type: none"> • <u>Access</u> • <u>Mineral Resource Area</u> • <u>Floodway, Seismic Fault Zone, Fire Hazard Area, Area of Soil Instability</u> • <u>Utility Easement</u> 	<p>Expands a Regional Open Space Corridor: The property is adjacent to and/or expands a regional open space corridor.</p> <p>Provides Links to Existing or Future Trail System: The location provides linkages to other trail systems.</p> <p>A means to approach or enter a site. In order to be valuable, a site should have some form of existing or attainable access.</p> <p>Gold mining and oil production mineral extraction areas, within and around the Santa Clarita Valley. Other mineral resource areas may include construction aggregate, titanium, and tuff materials. Specifically, mineral resource areas identified for managed production and protection include the Placer Gold Gulches, Lode Mines, Oil Fields, Construction Aggregate Resource Areas, and Santa Clara River Bed, as identified in Exhibit OS-5 of the City of Santa Clarita General Plan’s Open Space and Conservation Element.</p> <p>Natural hazard areas throughout the Santa Clarita Valley include, but are not limited to, floodways, seismic fault zones, wildland fire hazard areas, and areas of geologic instability, due to the presence of unstable soil conditions. Areas of soil instability that may be targeted for preservation should include unmitigable landslide and liquefaction hazard areas. Hazardous areas as specified above are identified in the City of Santa Clarita General Plan’s Open Space and Conservation Element, City of Santa Clarita General Plan’s Safety Element, and maps produced by the California State Department of Mines and Geology.</p> <p>Infrastructure improvements used to service the public, located either above ground or below, that include, but are not limited to, the following: solid waste collection, conversion, reduction and disposal lines; communication service lines (e.g., cable television/telephone lines), water supply and treatment lines, sewerage collection and treatment lines, storm drains, engineered flood control channels, natural gas pipelines, and electrical transmission lines.</p>
---	---

APPENDIX B

Open Space Preservation District Map



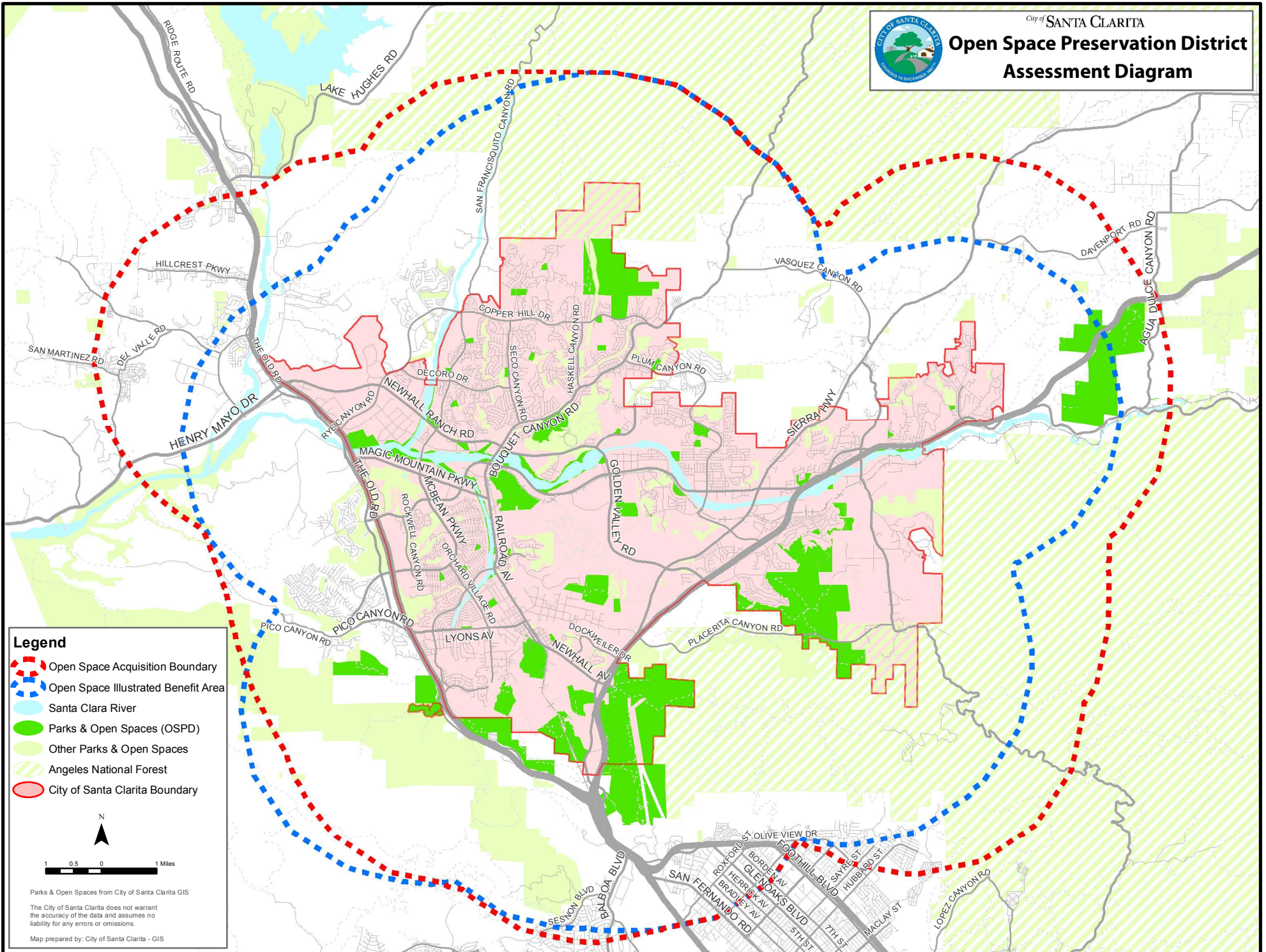
Contents:

- **Open Space Preservation District Map**



City of SANTA CLARITA

Open Space Preservation District Assessment Diagram



Legend

- Open Space Acquisition Boundary
- Open Space Illustrated Benefit Area
- Santa Clara River
- Parks & Open Spaces (OSP)
- Other Parks & Open Spaces
- Angeles National Forest
- City of Santa Clarita Boundary



1 0.5 0 1 Miles

Parks & Open Spaces from City of Santa Clarita GIS

The City of Santa Clarita does not warrant the accuracy of the data and assumes no liability for any errors or omissions.

Map prepared by: City of Santa Clarita - GIS