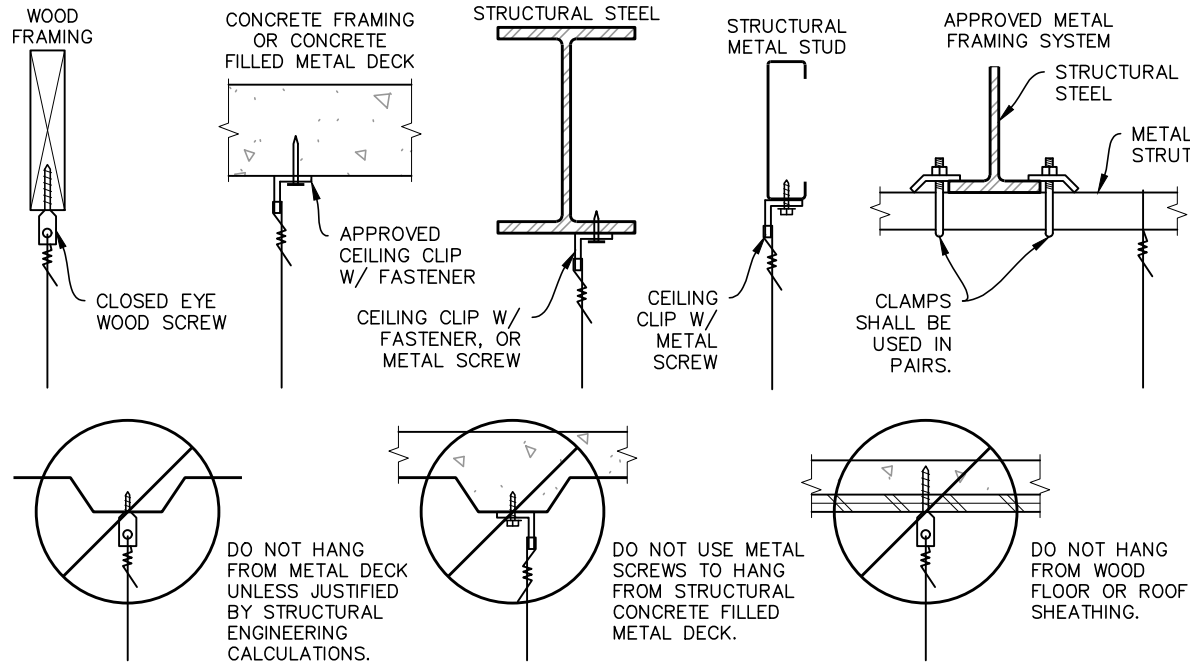


VERTICAL WIRE CONNECTION EXAMPLES

VERTICAL HANGER CONNECTIONS MUST SUSTAIN A MINIMUM LOAD OF 90 LBS



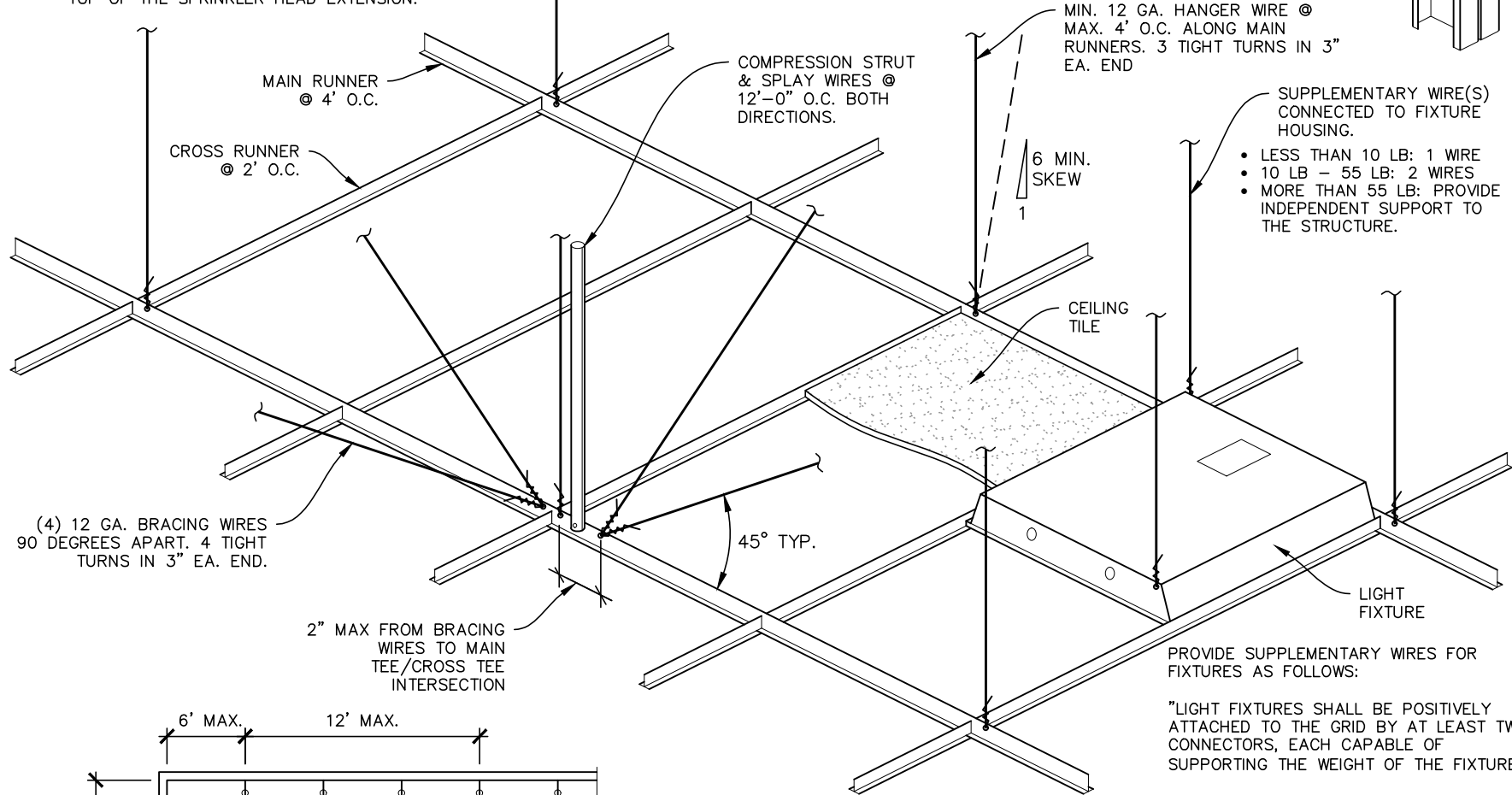
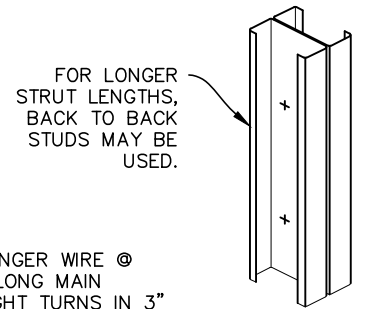
NOTES:

1. A HEAVY DUTY T-BAR GRID SYSTEM SHALL BE USED.
2. CEILING GRIDS AND FIXTURES SHALL BE INSTALLED PER THE MANUFACTURER'S INSTRUCTIONS. WHERE INSTRUCTIONS CONFLICT WITH THE BUILDING CODE, THE MORE RESTRICTIVE SHALL APPLY.
3. SPRINKLER HEADS AND OTHER PENETRATIONS SHALL HAVE A 2" OVERSIZE RING, SLEEVE, OR ADAPTER THROUGH THE CEILING TILE TO ALLOW FOR AT LEAST 1" MOVEMENT IN ALL HORIZONTAL DIRECTIONS. ALTERNATELY, A SWING JOINT IS PERMITTED AT THE TOP OF THE SPRINKLER HEAD EXTENSION.

COMPRESSION STRUT SCHEDULE

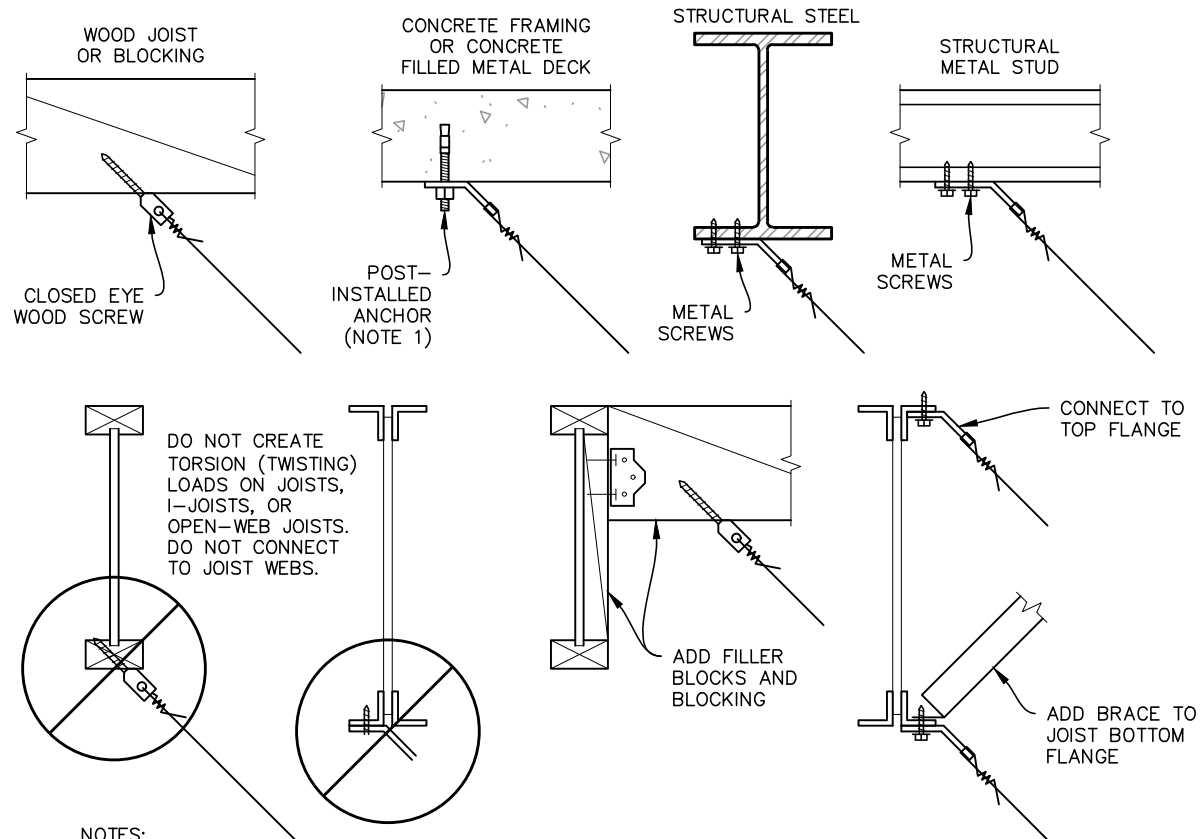
HEIGHT*	EMT OPTION	METAL STUD OPTION
UP TO 5'-0"	3/4" EMT	250T125-33 (20 GA.)
UP TO 6'-0"	1" EMT	250T125-33 (20 GA.)
UP TO 7'-0"	1-1/4" EMT	400S137-33 (20 GA.)
UP TO 10'-0"	-	400S200-33 (20 GA.)

* DISTANCE BETWEEN CEILING AND STRUCTURE ABOVE.

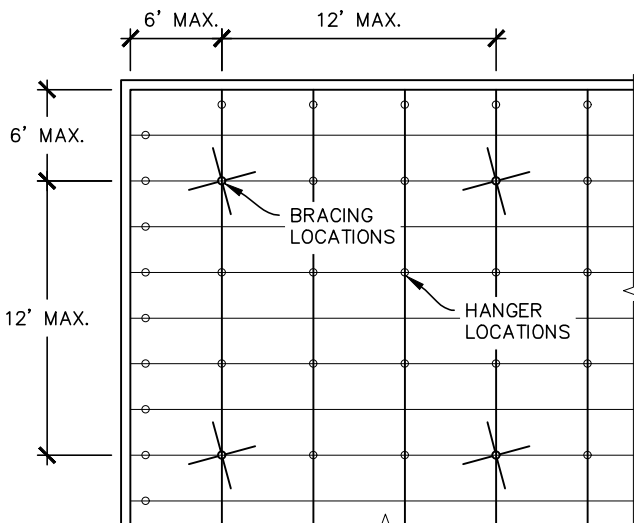


BRACING WIRE CONNECTION EXAMPLES

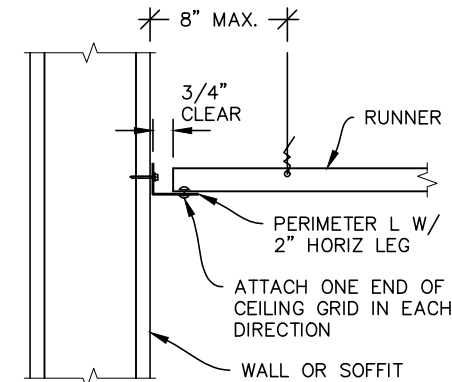
BRACING WIRE CONNECTIONS MUST HAVE A MINIMUM STRENGTH OF 250 LBS



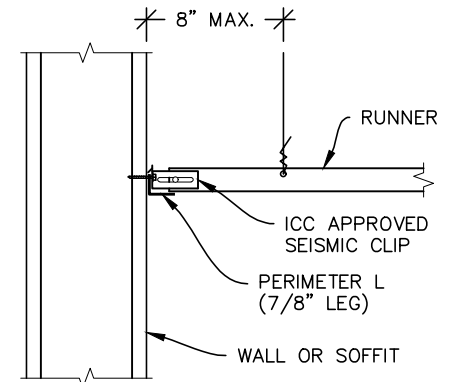
(4) 12 GA. BRACING WIRES 90 DEGREES APART. 4 TIGHT TURNS IN 3" EA. END.



CEILING SUPPORT PLAN



PERIMETER OPTION 1



PERIMETER OPTION 2

NOTES:

1. POST-INSTALLED ANCHORS (WEDGE BOLTS, SCREW ANCHORS, ETC.) SHALL BE ICC APPROVED FOR SEISMIC DESIGN CATEGORY 'E'. SPECIAL INSPECTION IS REQUIRED. SHOT PINS INTO CONCRETE SHALL NOT BE USED TO SUPPORT BRACING WIRES.
2. THIS SHEET IS PROVIDED FOR INFORMATION AND ILLUSTRATIVE PURPOSES ONLY. THE PROJECT DESIGNER AND/OR CONTRACTOR IS RESPONSIBLE FOR VERIFYING EXISTING CONDITIONS AND PREPARING CONSTRUCTION DRAWINGS SPECIFIC TO THE PROJECT.
3. SEE THE CALIFORNIA BUILDING CODE FOR ADDITIONAL PROVISIONS.



CITY OF SANTA CLARITA

BUILDING & SAFETY DIVISION
23920 Valencia Boulevard, Suite 140
Santa Clarita, CA 91355 (661) 255-4935

Suspended Acoustical Tile Ceilings Building Code Requirements