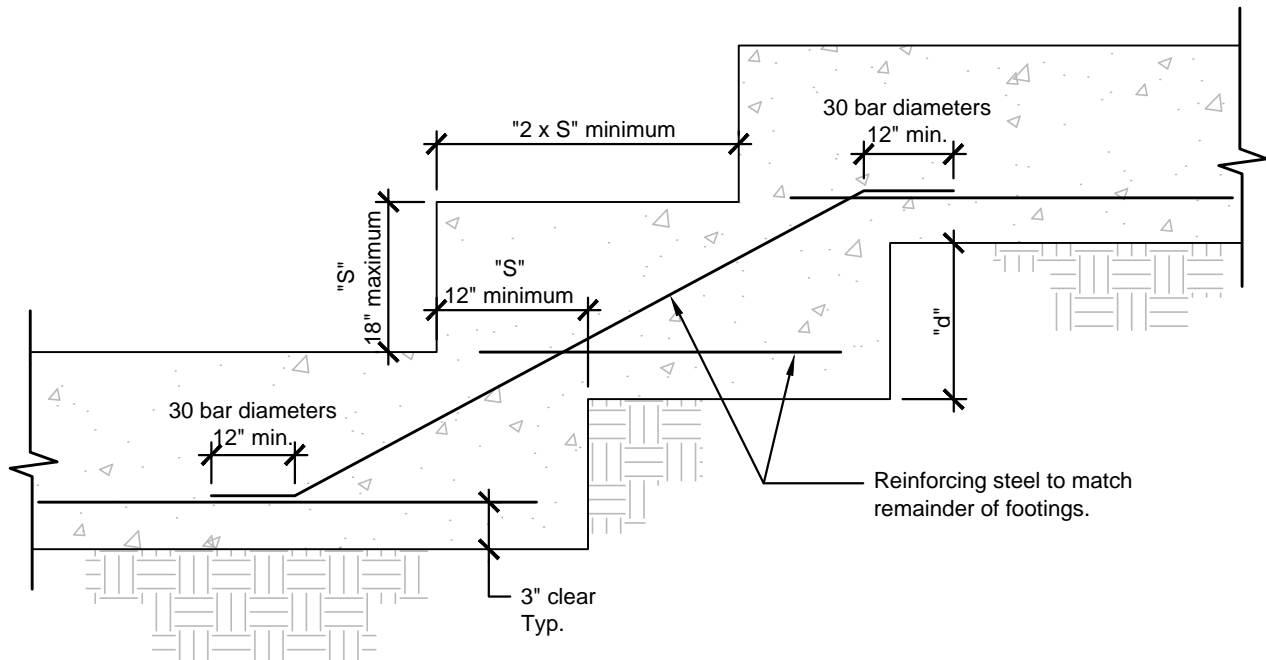


# TYPICAL STEPPED FOOTING DETAIL

(The following information is not meant to replace complete set of plans)

A stepped footing is required when the surface of the ground slopes more than 1 foot in 10 feet. The foundation shall be level or shall be stepped so that both top and bottom of such foundation are level.



"S" = depth of stepped footing wall (18" maximum)

"d" = depth of stepped footing at excavation ("S" minimum)

## CODE SECTIONS

UBC 2907-c

SBC 2-2907-c



City of  
**SANTA CLARITA**

## BUILDING & SAFETY

23920 Valencia Boulevard, Suite 140  
Santa Clarita, CA 91355  
Tel: (661) 255-4935 FAX: (661) 291-1559  
www.santa-clarita.com