

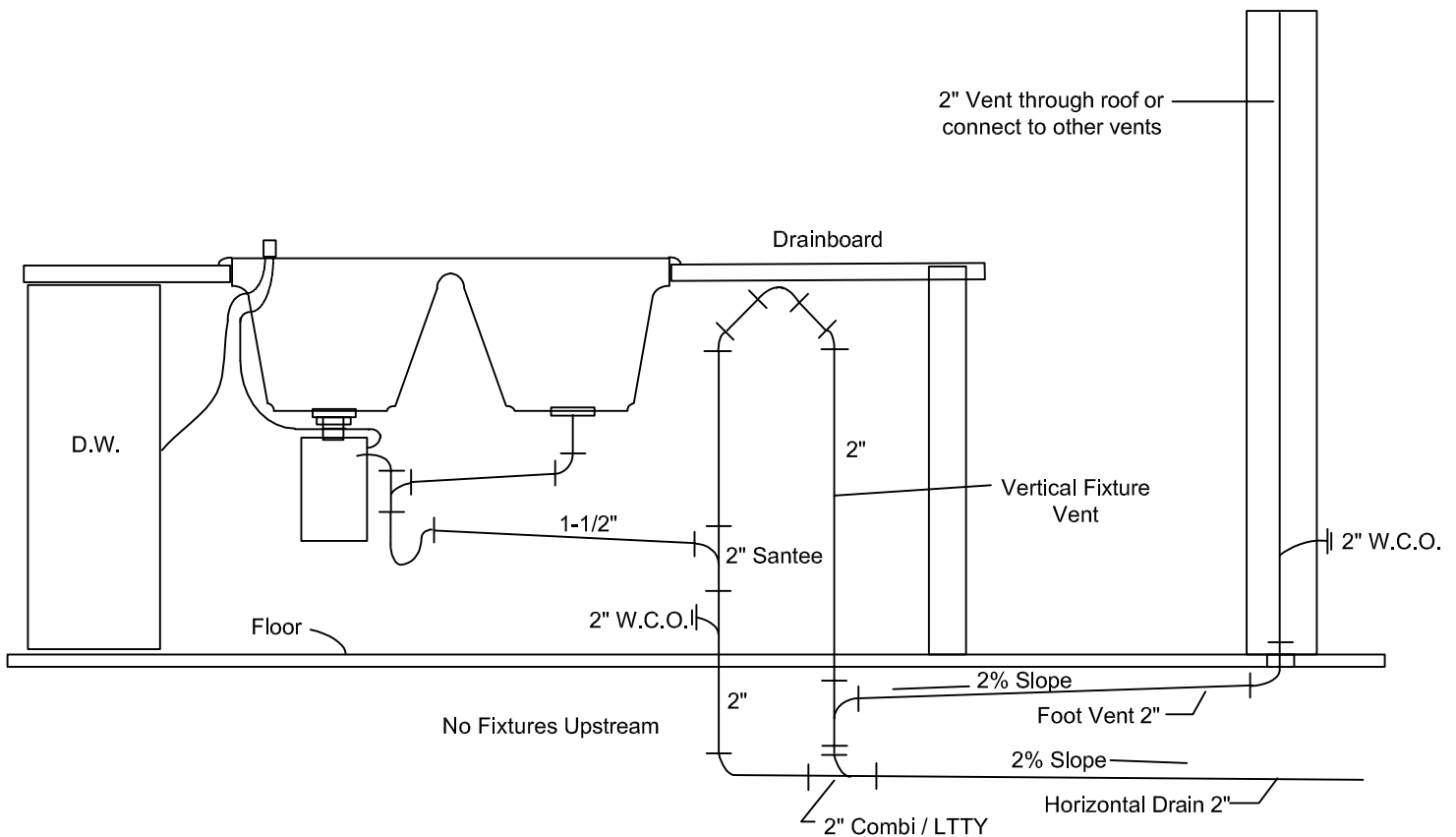
ISLAND FIXTURE VENTING

SINGLE FAMILY DWELLING

GENERAL NOTES

1

- 1) Island Venting limited to sinks and lavatories
- 2) Island vented with drainage pattern fittings only
- 3) Island vent must rise above fixture drain outlet (as high as possible - not less than drainboard height) before offsetting horizontally and down
- 4) Lowest part of island vent shall connect full size to a vertical drain or top half of a horizontal drain
- 5) Island vent connect to drain downstream of fixture drain
- 6) Cleanouts required in island fixture vents & drains
- 7) Foot vent with required through wye branch off below-floor vent
- 8) Cleanout required in vent (vertical section of foot vent)
- 9) Drain that serves island shall serve no other fixtures upstream from connection of return vent.



CITY OF SANTA CLARITA

BUILDING & SAFETY DIVISION

23920 Valencia Boulevard, Suite 140
Santa Clarita, CA 91355 (661) 255-4935