

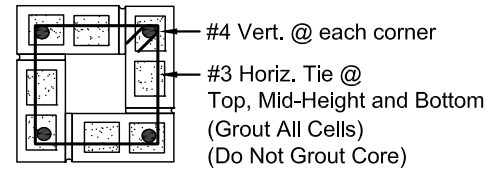
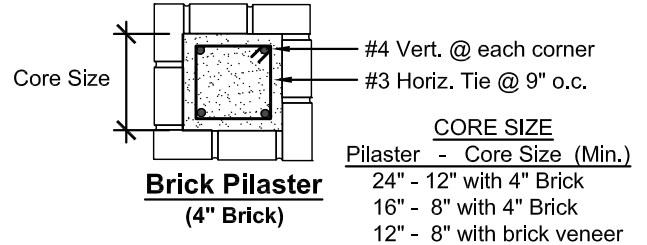
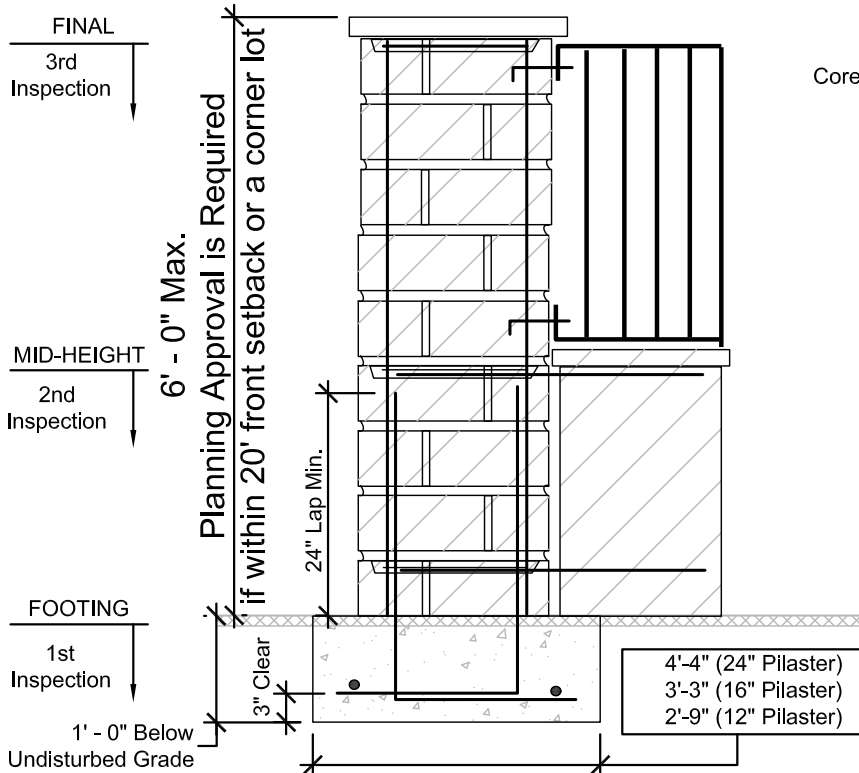


CITY OF SANTA CLARITA

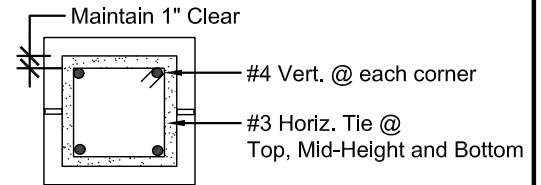
BUILDING & SAFETY DIVISION
 23920 Valencia Boulevard, Suite 140
 Santa Clarita, CA 91355 (661) 255-4935

Masonry Pilaster

(Not Retaining Soil)



Concrete Block Pilaster
(6" or 8" Block) See Note 9



Concrete Block Pilaster
(Single Cell or Split Block)

12" - 16" - 24" SQUARE PILASTER
24" Square Concrete Block Pilaster Shown (NTS)

GENERAL SPECIFICATIONS & NOTES

- Concrete mix for footings to be 1 part cement to 2 1/2 parts sand to 3 1/2 parts gravel with a maximum of 7 1/2 gallons of water per sack of cement. $f'c = 2500$ psi
- Concrete block units shall conform to ASTM C90 & ASTM C140, 1900 psi.
- Concrete block and brick units are to be staggered.
- Concrete block cells shall remain unobstructed from excess mortar and other debris. The bottom of the cell shall be free of construction debris prior to grouting.
- Mortar (ATSM C270) Type "S" mix for concrete blocks to be 1 part cement to 1/2 parts lime to 3 parts damp sand.
- Grout (ASTM C476, 2,000 psi) mix for concrete block wall to be 1 part cement to 3 parts sand to which may be more than 1/10 part lime. Sufficient water to be added to produce consistency for pouring segregation of the constituents. The grout may contain 2 parts pea gravel, maximum size.
- Reinforcing steel to be deformed and conform to ASTM A615.
- Ties shall be one piece and the terminations shall be wrapped around the rebar with a 135 degree bend.
- Slump stone shall have full width interior cell dimension.
- Pilaster may support a gate not to exceed 4' in width.
- No pipes, conduits, or ducts shall be placed in pilasters unless specifically noted or detailed on plan.
- First inspection to be after trenches are ready for concrete and all required steel is tied in place. Second inspection at mid-height bond beam and before lower half grout. Third inspection at top bond beam and before upper half grout. Final inspection to verify the work is completed prior to installing top cap.
- Foundation must be poured against undisturbed soil with no appreciable slope of side walls.
- Construction of block walls over 42" in height require a building permit from the City of Santa Clarita, prior to commencing construction.