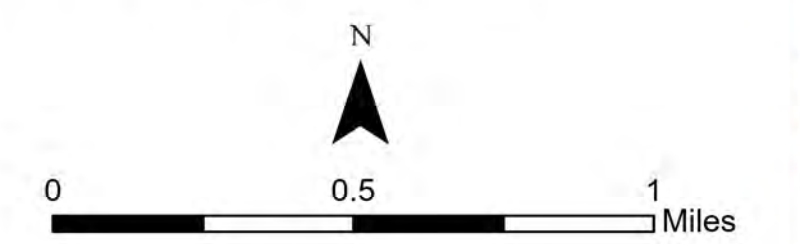


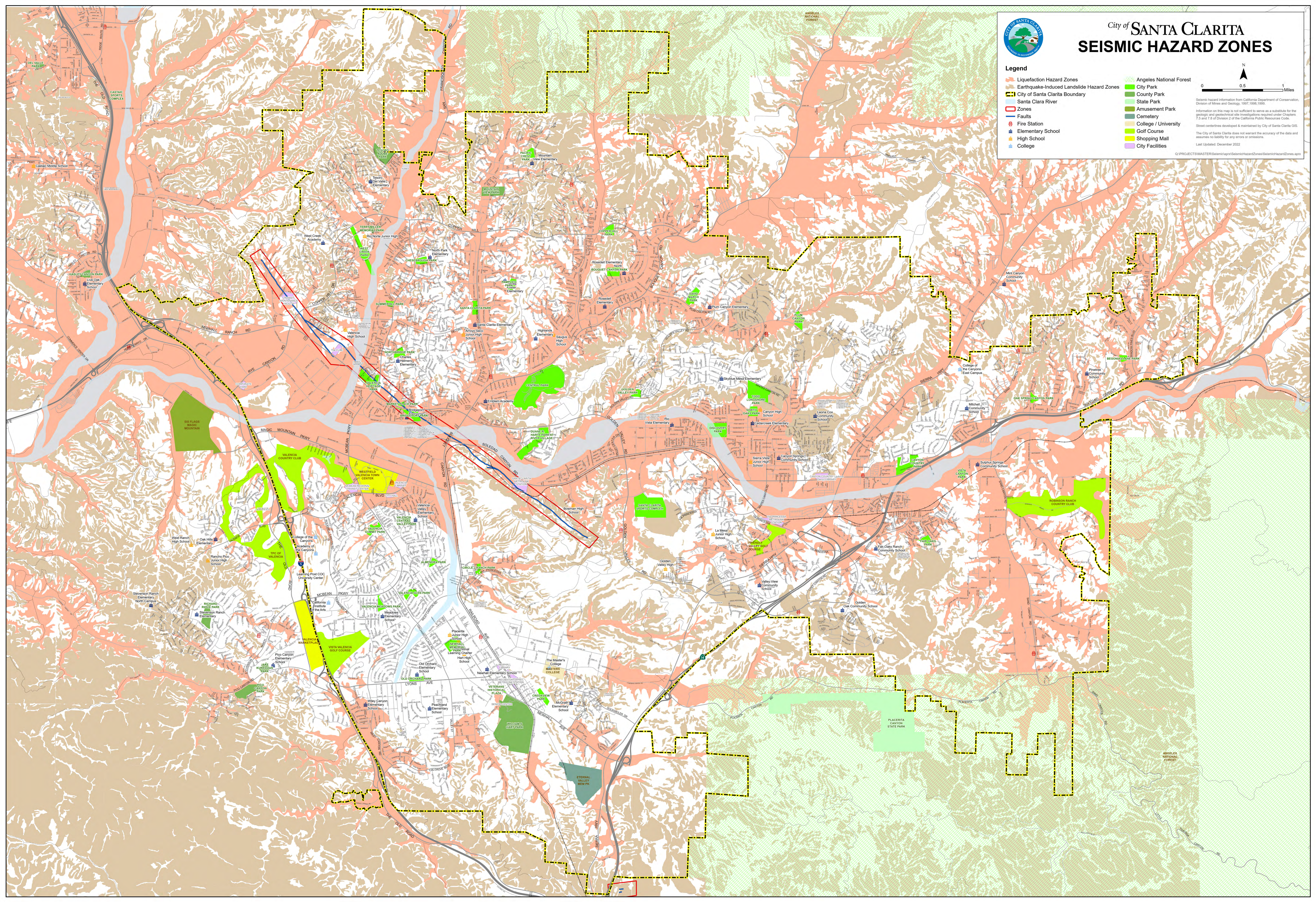
City of SANTA CLARITA SEISMIC HAZARD ZONES

Legend

- Liquefaction Hazard Zones
- Earthquake-Induced Landslide Hazard Zones
- City of Santa Clarita Boundary
- Santa Clara River
- Faults
- Fire Station
- Elementary School
- High School
- College
- Angeles National Forest
- City Park
- County Park
- State Park
- Amusement Park
- Cemetery
- College / University
- Golf Course
- Shopping Mall
- City Facilities



Seismic hazard information from California Department of Conservation, Division of Mines and Geology, 1997, 1998, 1999.
 Information on this map is not sufficient to serve as a substitute for the geologic and geotechnical site investigations required under Chapters 7.5 and 7.8 of Division 2 of the California Public Resources Code.
 Street centerlines developed & maintained by City of Santa Clarita GIS.
 The City of Santa Clarita does not warrant the accuracy of the data and assumes no liability for any errors or omissions.
 Last Updated: December 2022



Q:\PROJECTS\MASTERS\GIS\apn\Seismic\Hazard\Zones\SeismicHazardZones.aprx