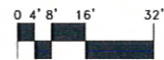
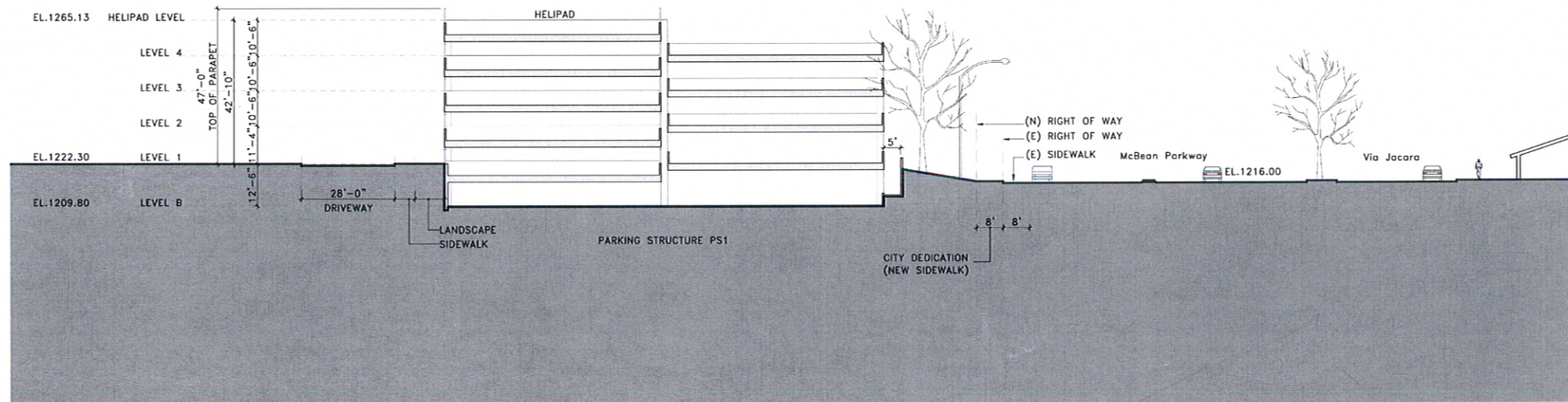
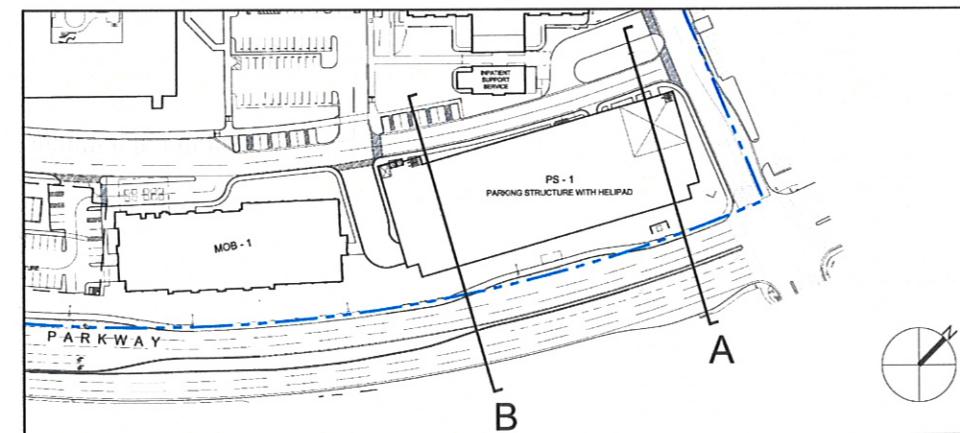


SECTION - A



SECTION - B

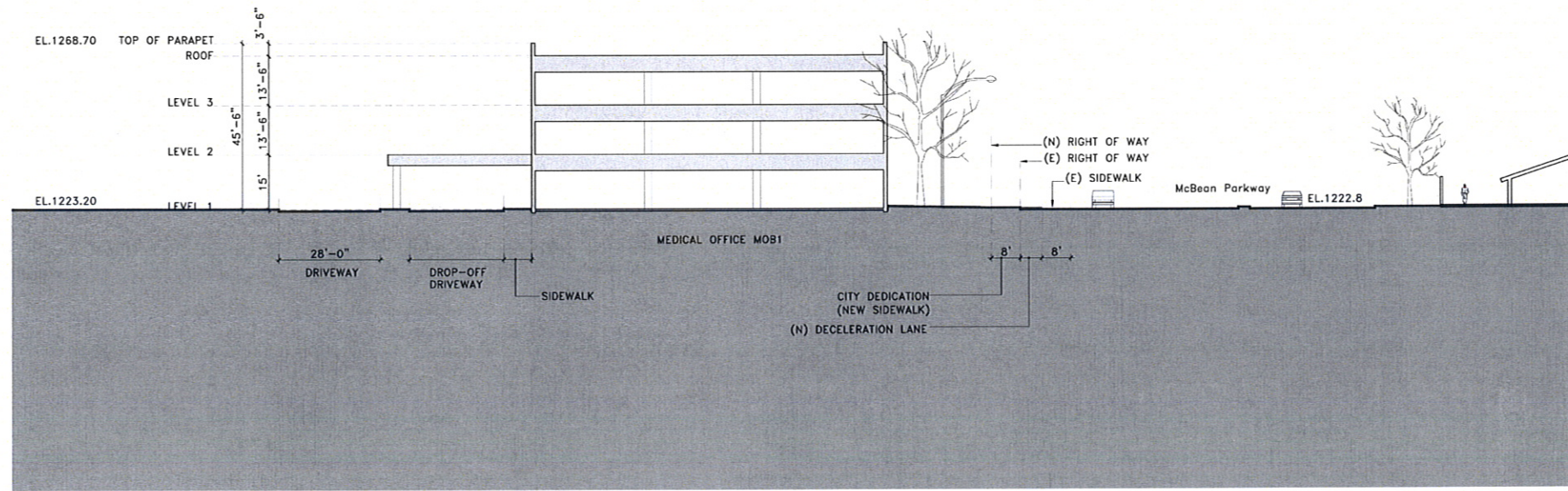


PS1 / SECTION - A & B

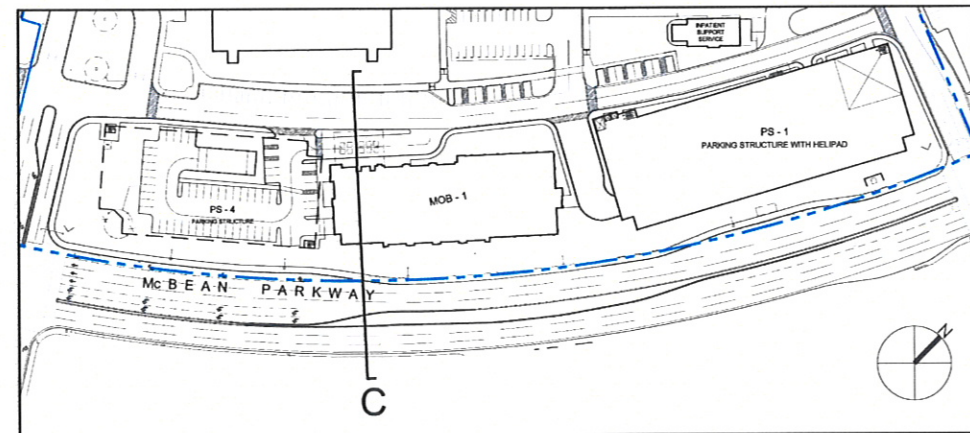
HENRY MAYO NEWHALL MEMORIAL HOSPITAL - MASTER PLAN  
23845 McBean Parkway, Santa Clarita, CA 91355

SWA #: 060307 NOVEMBER 19, 2008

48 east holly street  
pasadena, ca 91103  
tel 626 791 6665 • fax 626 791 0607



SECTION - C



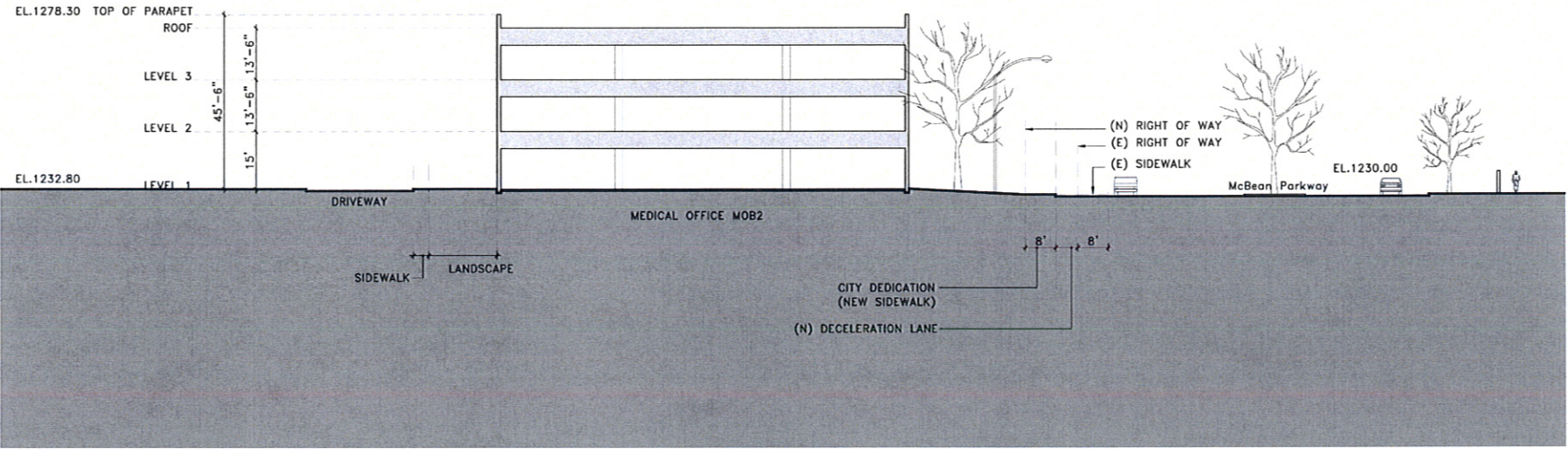
MOB1 / SECTION - C

HENRY MAYO NEWHALL MEMORIAL HOSPITAL - MASTER PLAN  
23845 McBean Parkway, Santa Clarita, CA 91355

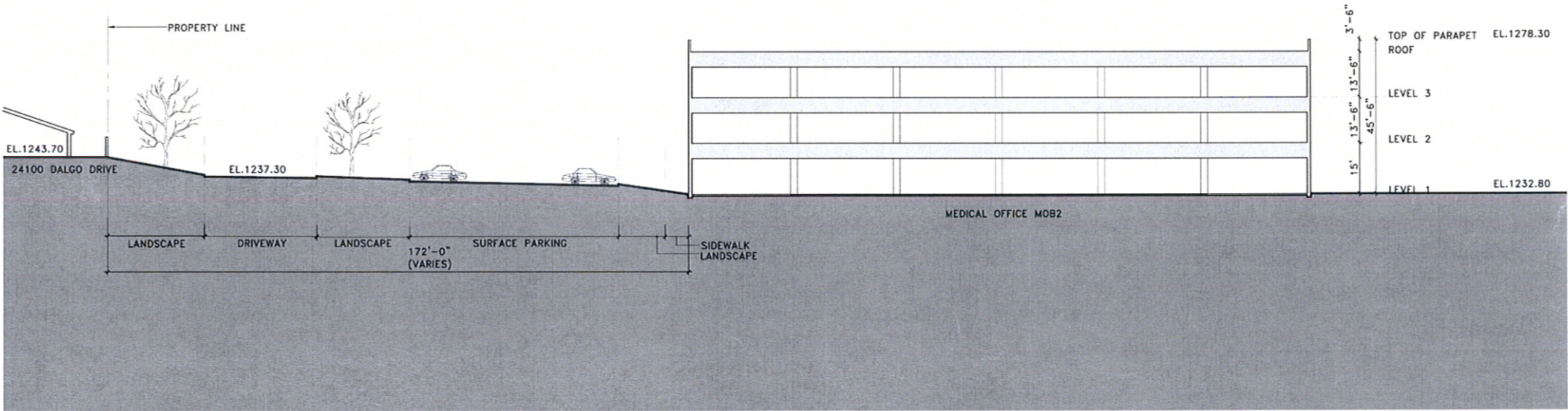
SWA # 060307 NOVEMBER 19, 2008



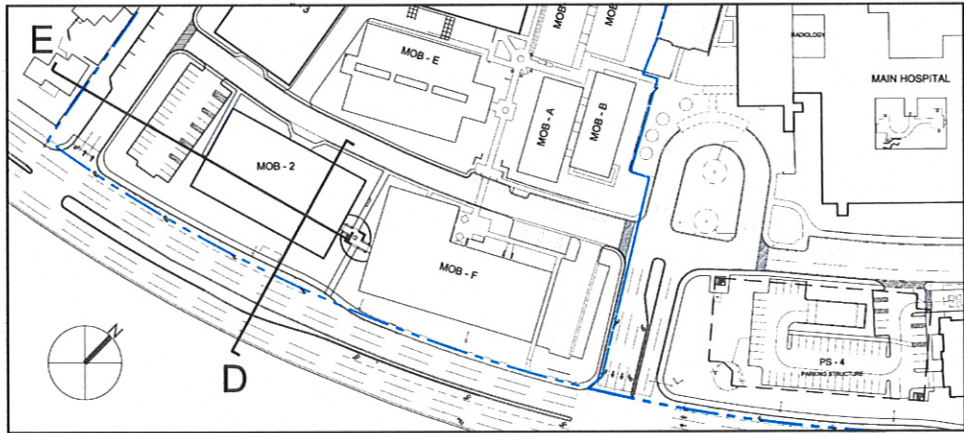
48 east holly street  
pasadena, ca 91103  
tel 626 793 0805 • fax 626 793 0857



SECTION - D



SECTION - E



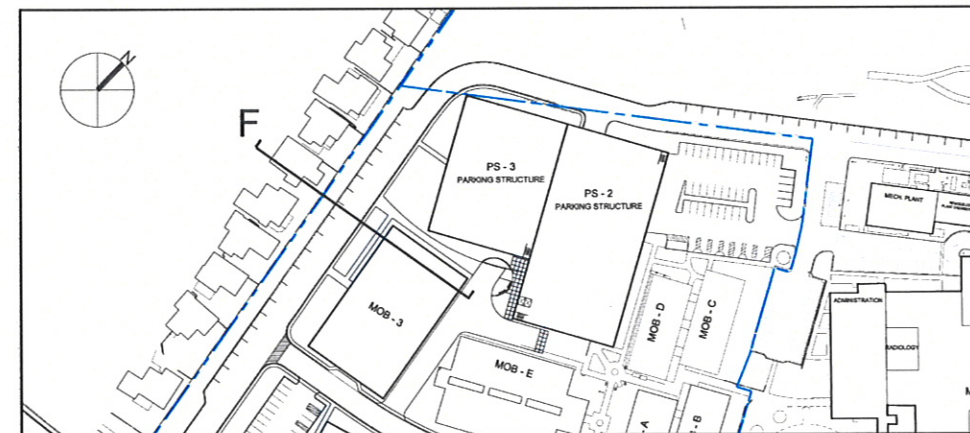
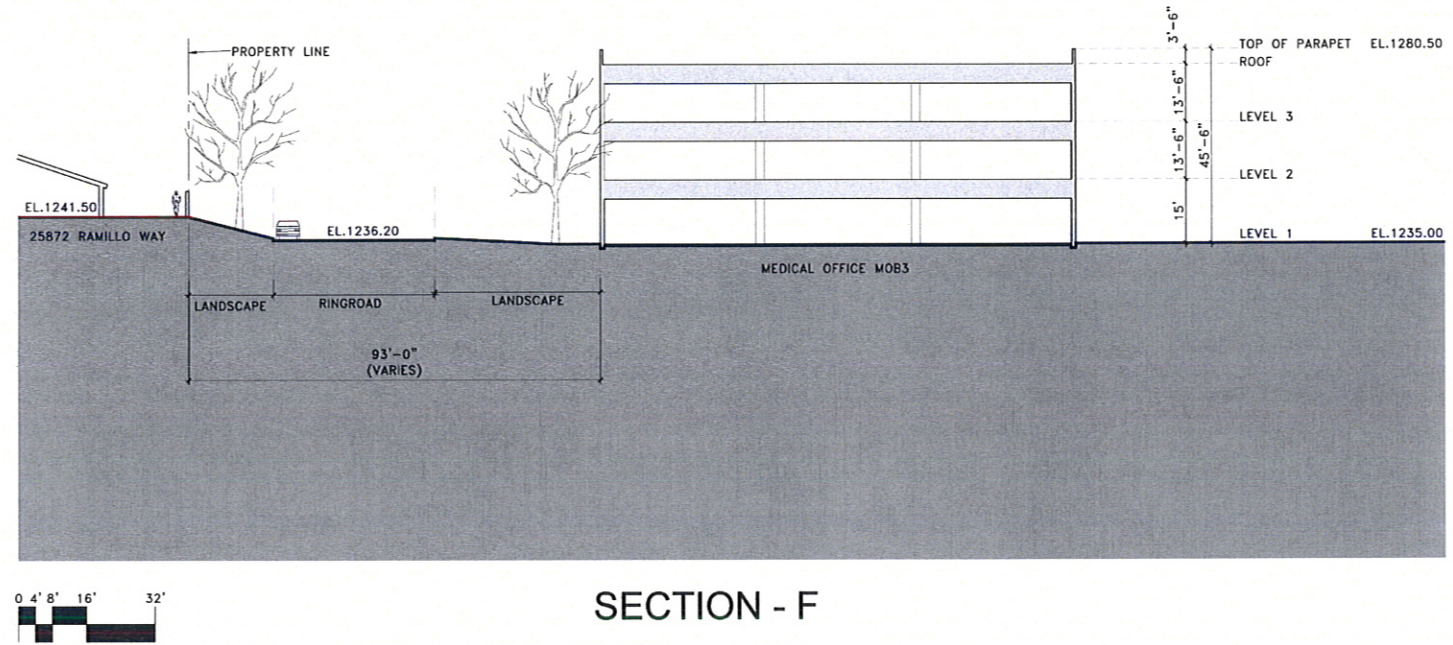
MOB2 / SECTION - D & E

HENRY MAYO NEWHALL MEMORIAL HOSPITAL - MASTER PLAN  
23845 McBean Parkway, Santa Clarita, CA 91355

SWA #: 060307 NOVEMBER 19, 2008



48 east holly street  
pasadena, ca 91103  
tel 626 791 6655 • fax 626 791 0677



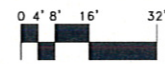
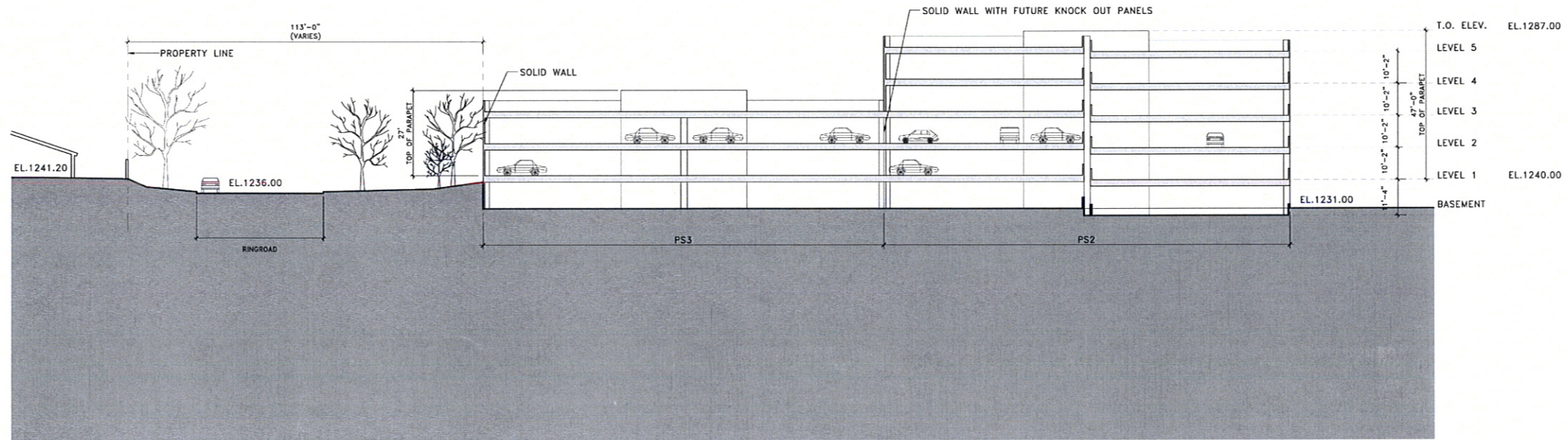
MOB3 / SECTION - F

HENRY MAYO NEWHALL MEMORIAL HOSPITAL - MASTER PLAN  
23845 McBean Parkway, Santa Clarita, CA 91355

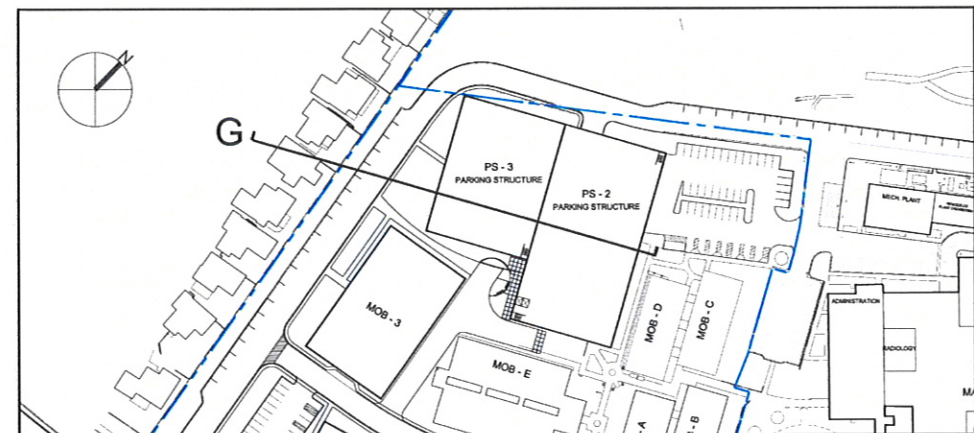
SWA # 060307 NOVEMBER 19, 2008



48 east holly street  
pasadena, ca 91103  
tel 626 791 0005 • fax 626 791 0007



SECTION - G



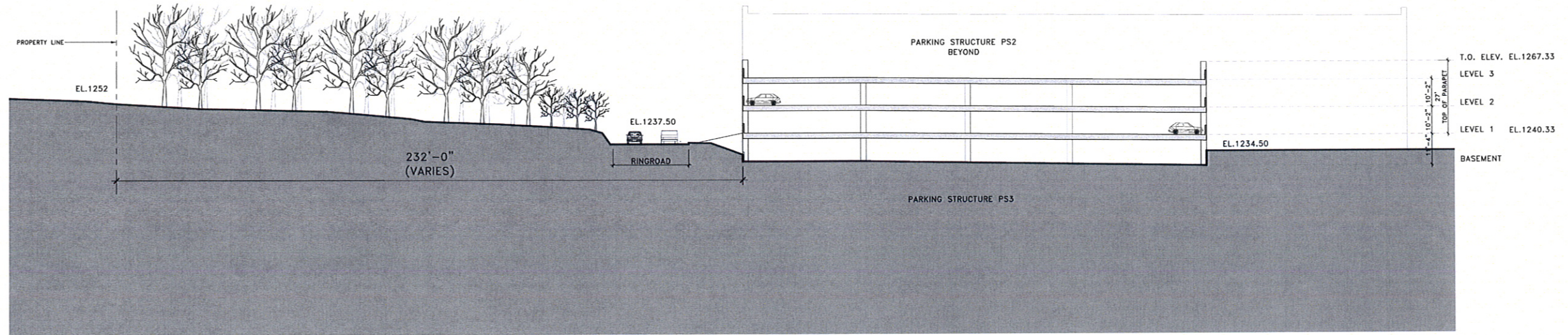
PS2 & PS3 / SECTION - G

HENRY MAYO NEWHALL MEMORIAL HOSPITAL - MASTER PLAN  
23845 McBean Parkway, Santa Clarita, CA 91355

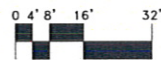
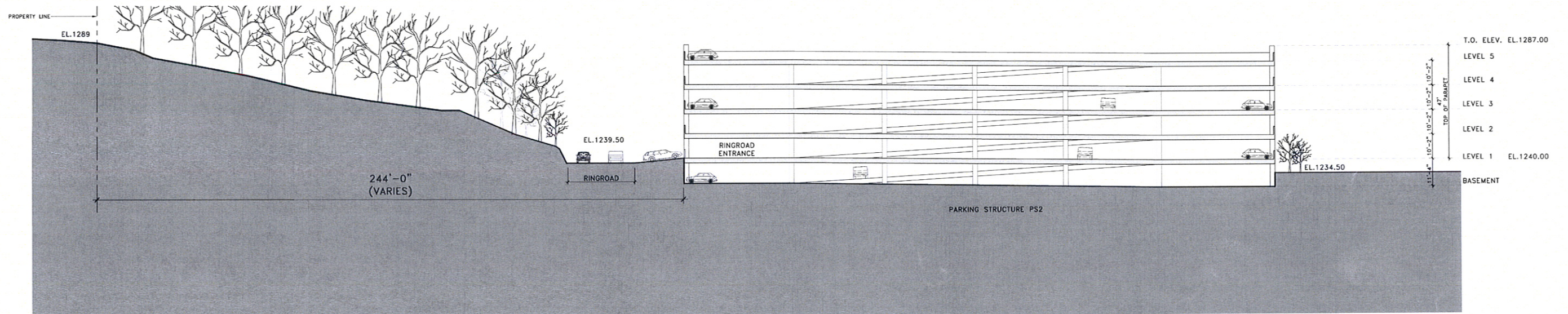
SWA #: 060307 NOVEMBER 19, 2008



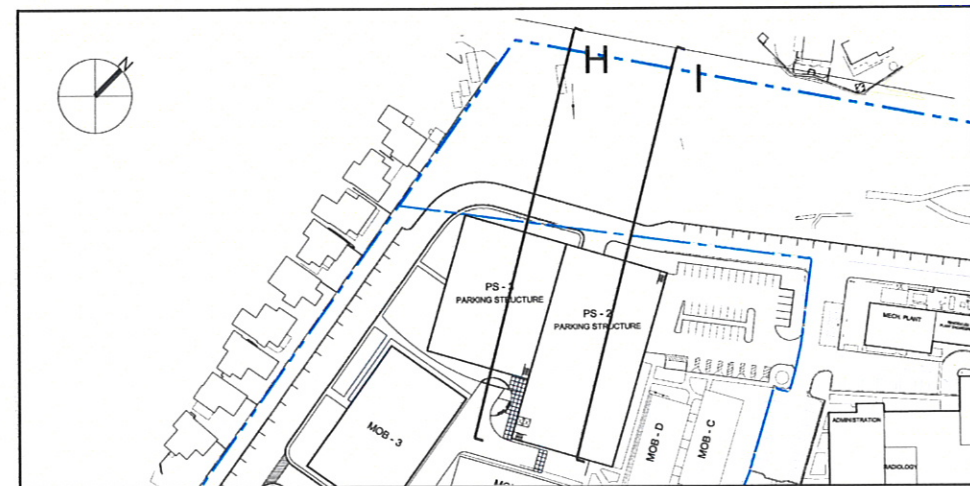
48 east holly street  
pasadena, ca 91103  
tel 626 793 6605 • fax 626 793 0877



SECTION - H



SECTION - I



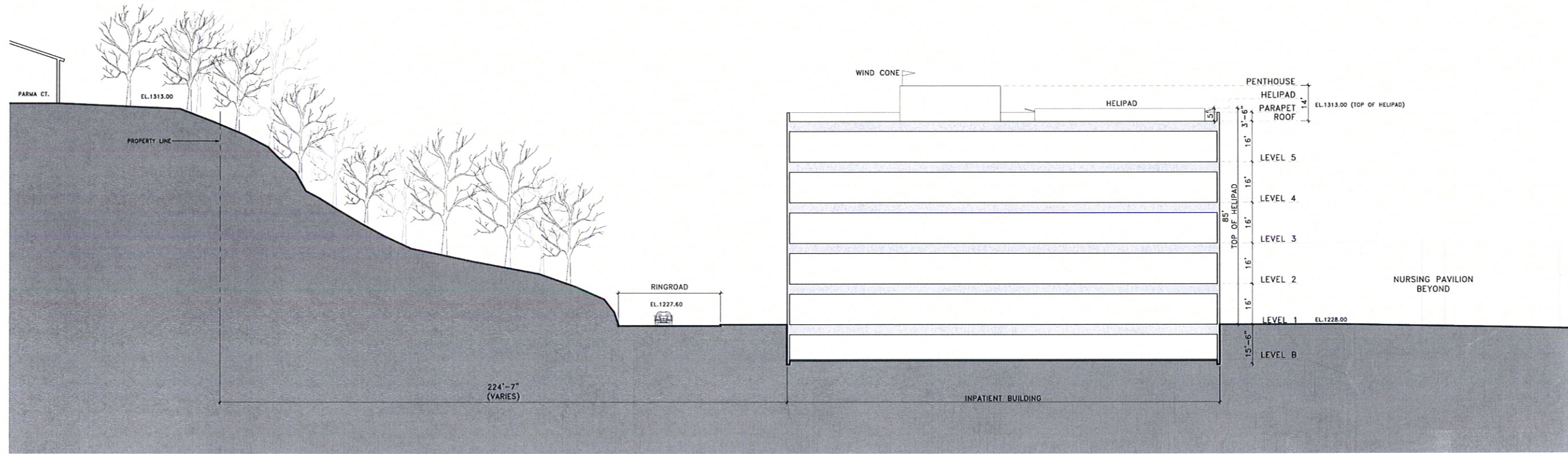
PS2 & PS3 / SECTION - H & I

HENRY MAYO NEWHALL MEMORIAL HOSPITAL - MASTER PLAN  
23845 McBean Parkway, Santa Clarita, CA 91355

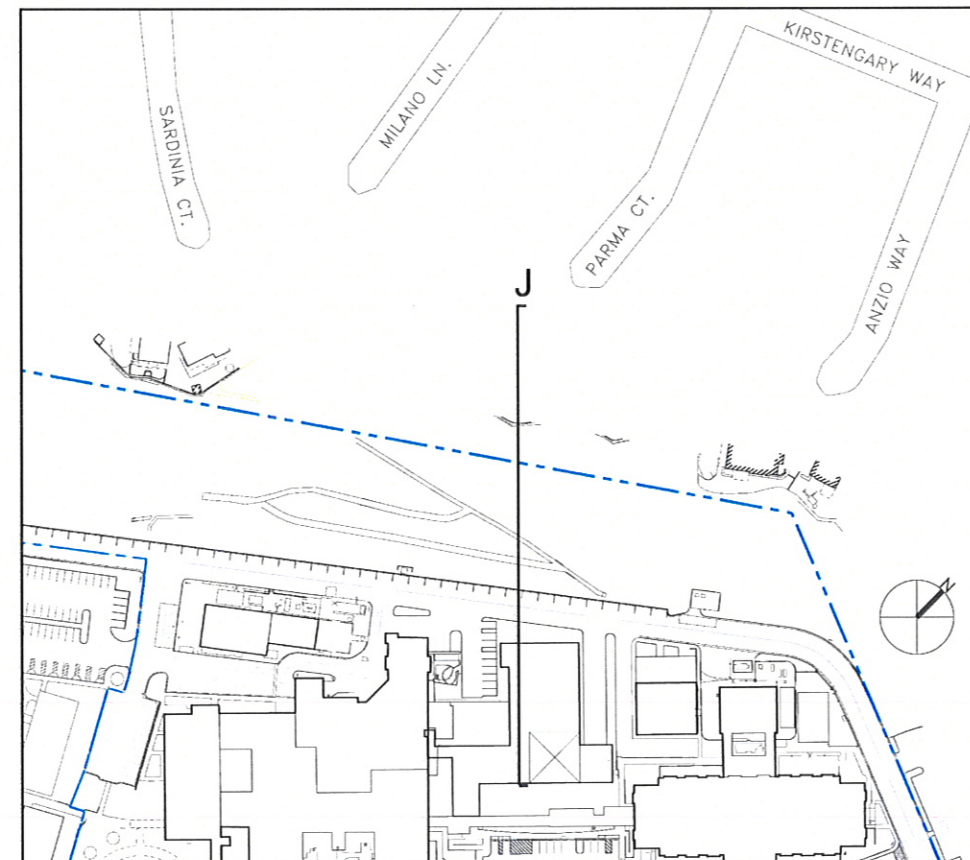
SWA # 060307 NOVEMBER 19, 2008



48 east holly street  
pasadena, ca 91103  
tel 626 791 0600 fax 626 791 0607



SECTION - J



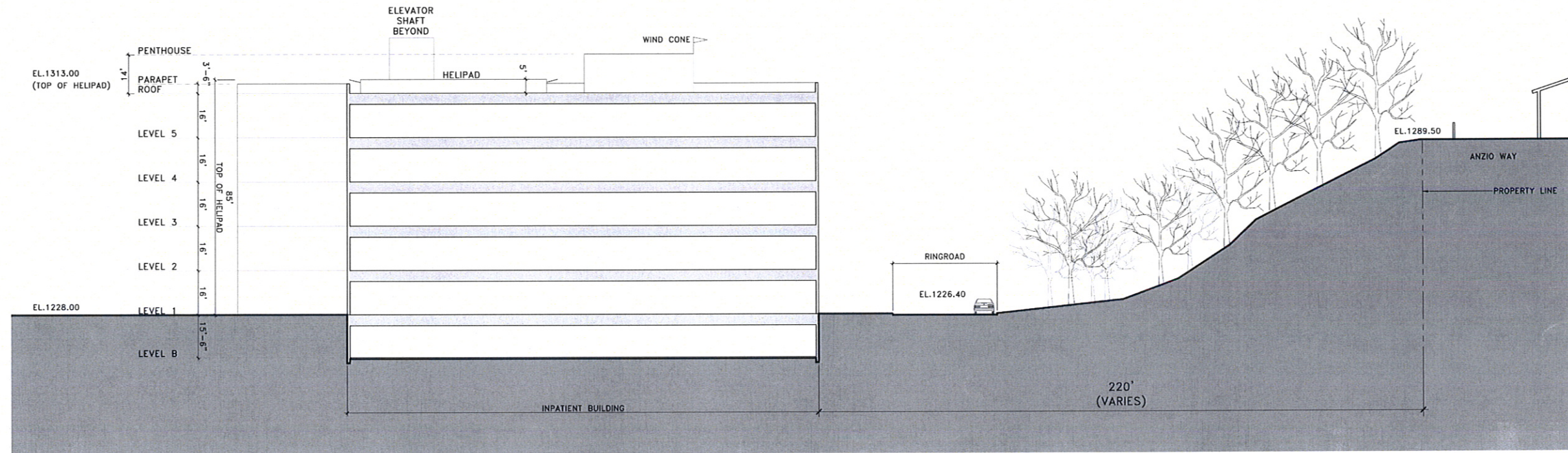
INPATIENT BUILDING / SECTION - J

HENRY MAYO NEWHALL MEMORIAL HOSPITAL - MASTER PLAN  
23845 McBean Parkway, Santa Clarita, CA 91355

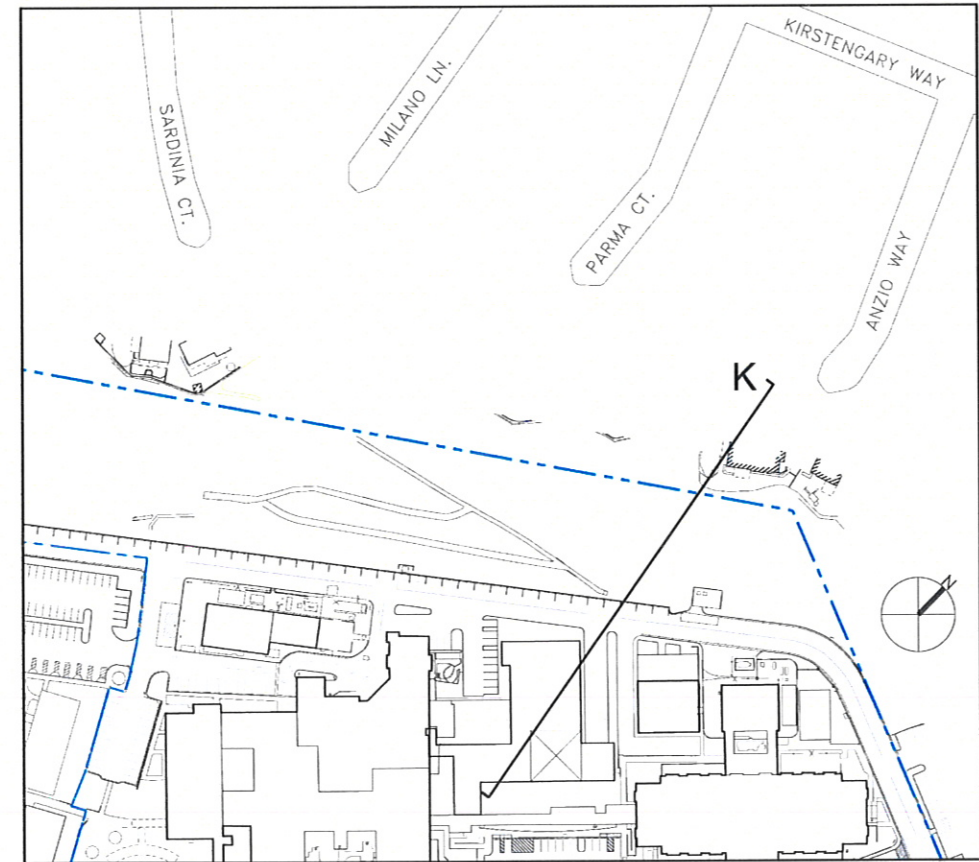
SWA # 060307 NOVEMBER 19, 2008



48 east holly street  
pasadena, ca 91103  
tel 626 791 6616 - fax 626 791 0077



SECTION - K



INPATIENT BUILDING / SECTION - K

HENRY MAYO NEWHALL MEMORIAL HOSPITAL - MASTER PLAN  
23845 McBean Parkway, Santa Clarita, CA 91355

SWA # 060307 NOVEMBER 19, 2008



48 east holly street  
pasadena, ca 91103  
tel 626 791 9600 - fax 626 791 9607



## TREE SUMMARY FOR THE FRONTAGE ALONG McBEAN PARKWAY

Date: NOVEMBER 19, 2008

Henry Mayo Newhall Memorial Hospital  
23845 McBean Parkway, Santa Clarita, CA 91355

	<b>Trees Along McBean Parkway - Street Median (From Avenida Navarre to Alegro Dr.) *</b>	<b>Trees Along McBean Parkway – HMNMH Frontage</b>
<b>TOTAL NUMBER OF EXISTING TREES: (Before Construction of The Master Plan)</b>	<b>58</b>	<b>57</b>
<b>TOTAL NUMBER OF EXISTING TREES TO BE REMOVED: (For Construction of The Master Plan)</b>	<b>-12</b>	<b>-34</b>
<b>TOTAL NUMBER OF EXISTING TREES TO REMAIN: (For Construction of The Master Plan)</b>	<b>46</b>	<b>23</b>
<b>TOTAL NUMBER OF NEW TREES: (For Construction of The Master Plan)</b>	<b>7</b>	<b>57</b>
<b>TOTAL NUMBER OF TREES: (After Construction of The Master Plan)</b>	<b>53</b>	<b>80</b>

\* INCLUDES REMOVAL OF 6 MEDIAN TREES LOCATED WEST OF HMNMH CAMPUS

### MASTER PLAN TREE SUMMARY

HENRY MAYO NEWHALL MEMORIAL HOSPITAL - MASTER PLAN  
23845 McBean Parkway, Santa Clarita, CA 91355

SWA #: 060307 NOVEMBER 19, 2008

