



Tree Legend

Symbol	Botanical Name	Common Name
	<i>Cedrus deodara</i>	Deodar Cedar
	<i>Chorisia Species</i>	Floss Silk Tree
	<i>Cinnamomum camphora</i>	Camphor Tree
	<i>Eucalyptus rudis</i>	Flooded Gum

Symbol	Botanical Name	Common Name
	<i>Fraxinus uhdei</i>	Shamel Ash
	<i>Gleditsia triacanthos</i>	Honeylocust
	<i>Grevillea robusta</i>	Silky Oak
	<i>Koelreuteria bipinnata</i>	Chinese Flame Tree

Symbol	Botanical Name	Common Name
	<i>Lagerstroemia indica</i>	Crape Myrtle
	<i>Liquidambar styraciflua</i>	American Sweet Gum
	<i>Platanus racemosa</i>	Sycamore
	<i>Prunus 'Krauter Vesuvius'</i>	Purple Leaf Plum

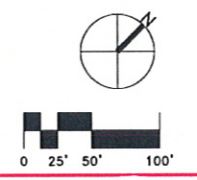
Color Legend

Symbol	Action
	Remain
	Remove

TREE REMOVAL PLAN (ALONG McBEAN PARKWAY)

HENRY MAYO NEWHALL MEMORIAL HOSPITAL - MASTER PLAN
23845 McBean Parkway Santa Clarita, CA 91355

SWA #: 060307 NOVEMBER 19, 2008



ID
LANDSCAPE ARCHITECTURE
LA

IAN DAVISON, LANDSCAPE ARCHITECTURE
2524 TENTH STREET
SANTA CLARITA, CA 91351

PH: 805-383-1438 FAX: 805-383-1432
E-MAIL: IDAVISON@IDLA.LA.COM
12231 RAY DRIVE NO. 207

SWA
ARCHITECTS

48 east holly street
pasadena, ca 91103
tel: 626.793.9805 fax: 626.793.9807



EXISTING TREE PROTECTED IN PLACE

PROPOSED TREE LEGEND



1 CINNAMOMUM CAMPHORA - CAMPHOR TREE



2 RHUS LANCEA - AFRICAN SUMAC



3 LAGERSTROEMIA INDICA - CRAPE MYRTLE



4 PLATANUS RACEMOSA - SYCAMORE



5 PRUNUS C 'KRAUTER VES' MULTI TRUNK - PURPLE LEAF PLUM

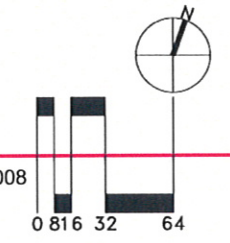


6 KOELREUTERIA BIPINNATA - CHINESE FLAME TREE

CONCEPTUAL LANDSCAPE PLAN - MOB 2 AND MOB F (ALONG McBEAN PARKWAY)

HENRY MAYO NEWHALL MEMORIAL HOSPITAL - MASTER PLAN
23845 McBean Parkway Santa Clarita, CA 91355

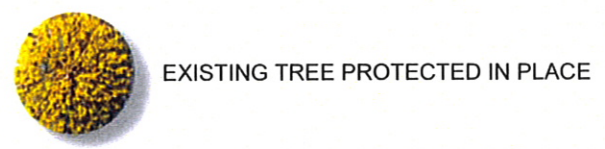
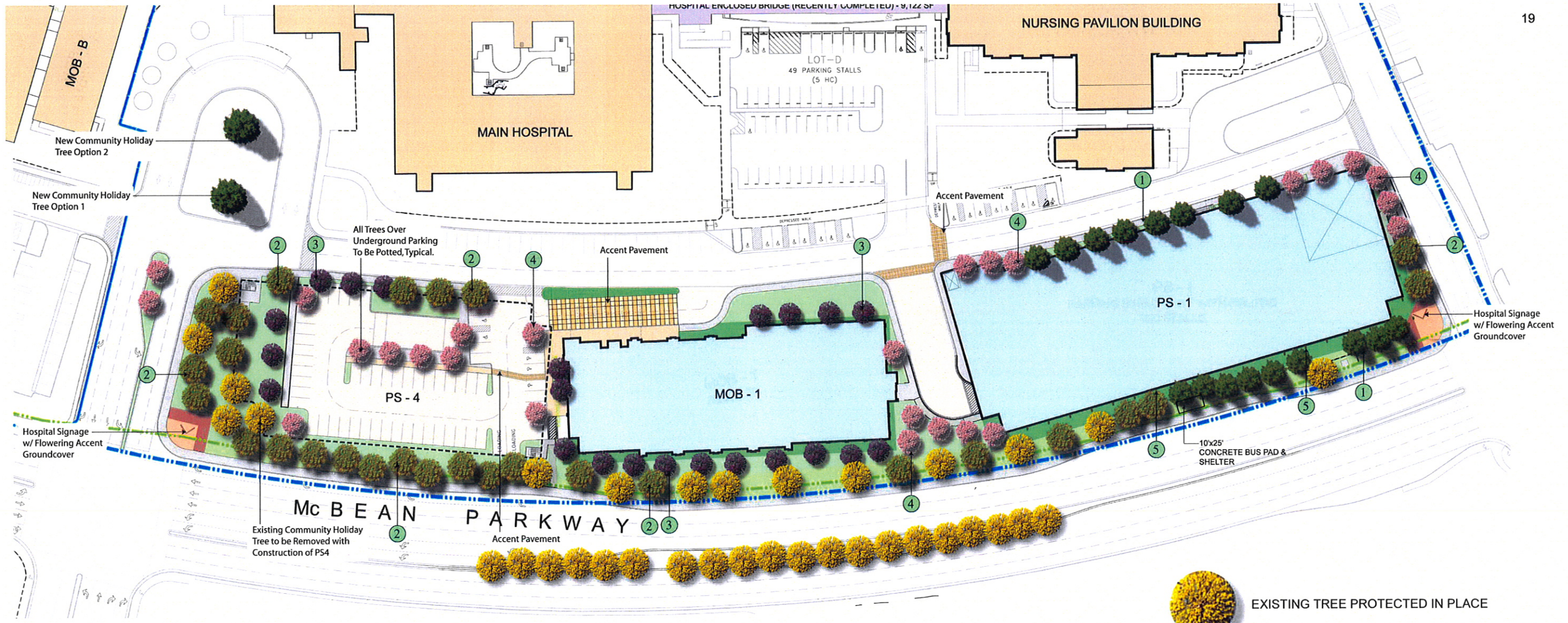
SWA #: 060307 NOVEMBER 19, 2008



IAN DAVIDSON, LANDSCAPE ARCHITECTURE
1100 TENTH STREET
RIVERSIDE, CA 92501
PH: 951.581.1281 FAX: 951.581.4312
EMAIL: IDAVIDSON@DAVINC.COM
REGISTERED PROFESSIONAL LANDSCAPE ARCHITECT



48 east holly street
pasadena, ca 91103
tel: 626.793.9500 • fax: 626.793.9807



PROPOSED TREE LEGEND



1 PINUS CANARIENSIS - CANARY ISLAND PINE



2 PLATANUS RACEMOSA - SYCAMORE



3 PRUNUS C 'KRAUTER VES' MULTI TRUNK - PURPLE LEAF PLUM



4 LAGERSTROEMIA INDICA - CRAPE MYRTLE

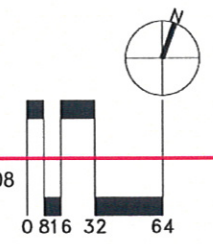


5 FICUS PUMILA VINE - CREEPING FIG

CONCEPTUAL LANDSCAPE PLAN - MOB 1 AND PS1 (ALONG McBEAN PARKWAY)

HENRY MAYO NEWHALL MEMORIAL HOSPITAL - MASTER PLAN
23845 McBean Parkway Santa Clarita, CA 91355

SWA #: 060307 NOVEMBER 19, 2008



ID
LANDSCAPE ARCHITECTURE
LA

SAN DAVIDSON, LANDSCAPE ARCHITECTURE
3744 TENTH STREET
STAYBROS, CA 91359

PH: 661.261.8188 FAX: 661.261.8188
E-MAIL: SANDAVIDSON@SANDID.COM
WWW.SANDID.COM



48 east holly street
pasadena, ca 91103
tel: 626.793.9805 - fax: 626.793.9807



PROPOSED TREE LEGEND



1 CINNAMOMUM CAMPHORA - CAMPHOR TREE



2 RHUS LANCEA - AFRICAN SUMAC



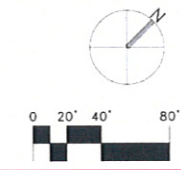
3 PINUS ELДАРICA - AFGHAN PINE



EXISTING TREE PROTECTED IN PLACE

CONCEPTUAL LANDSCAPE PLAN (ALONG HILLSIDE AND WESTERN BOUNDARY)

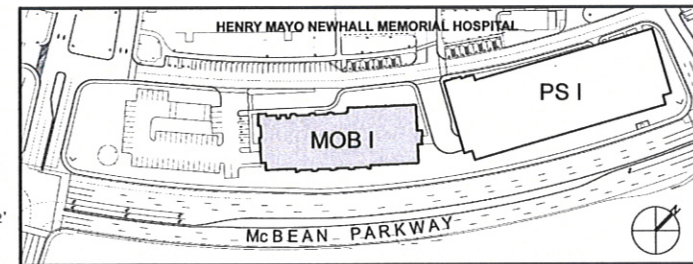
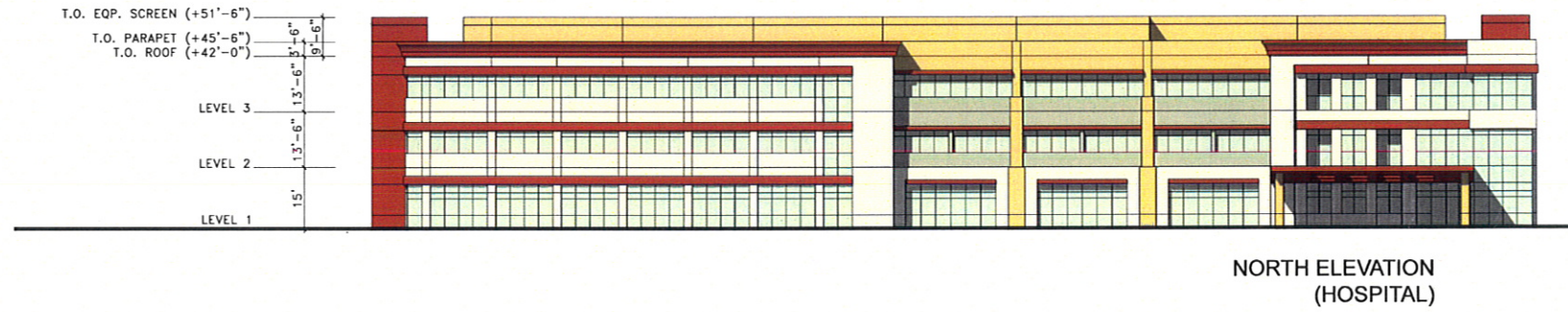
HENRY MAYO NEWHALL MEMORIAL HOSPITAL - MASTER PLAN
23845 McBean Parkway, Santa Clarita, CA 91355



SWA #: 060307 NOVEMBER 19, 2008

Ken Davidson, Landscape Architecture
3144 TENTH STREET
RIVERSIDE, CA 92501
951.883.1283 FAX 951.883.4352
E-MAIL: DAVIDSON@DLA.COM
REGISTRATION NO. 2801

48 east holly street
pasadena, ca 91103
tel 626.793.9805 fax 626.793.9807



MOB I: COLOR - BUILDING EXTERIOR ELEVATIONS

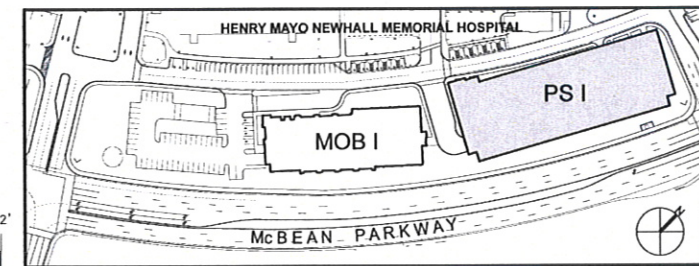
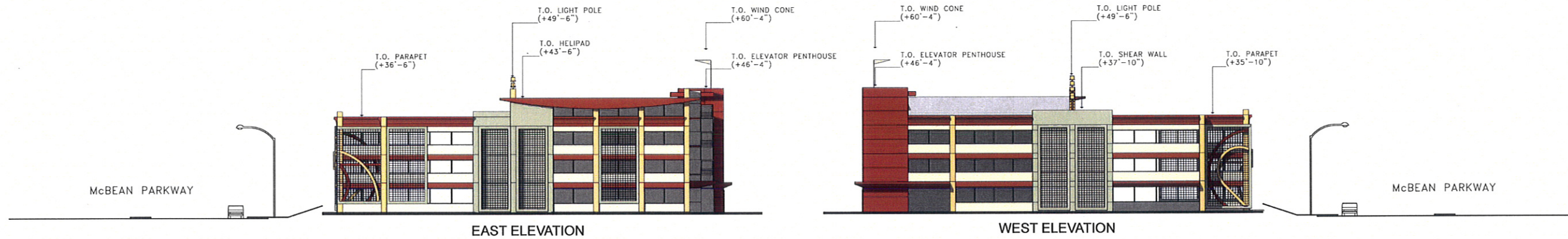
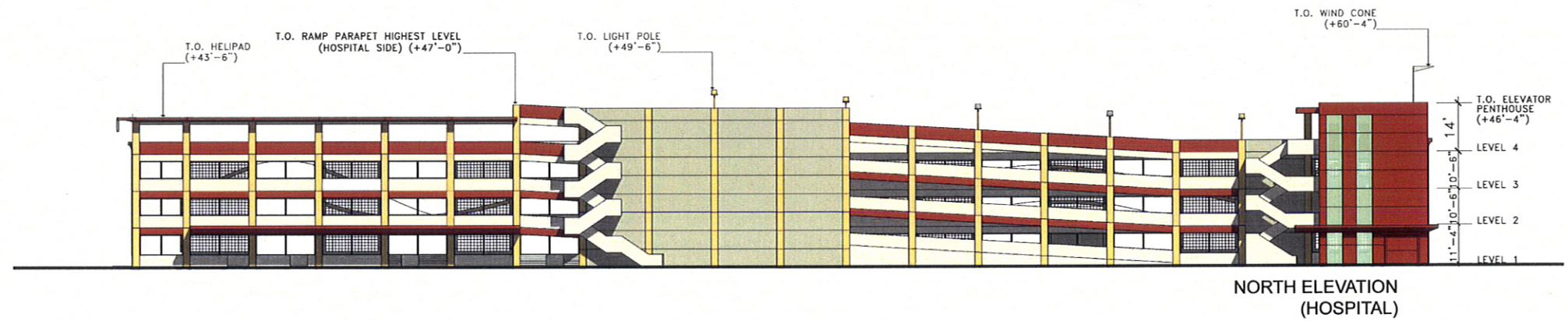
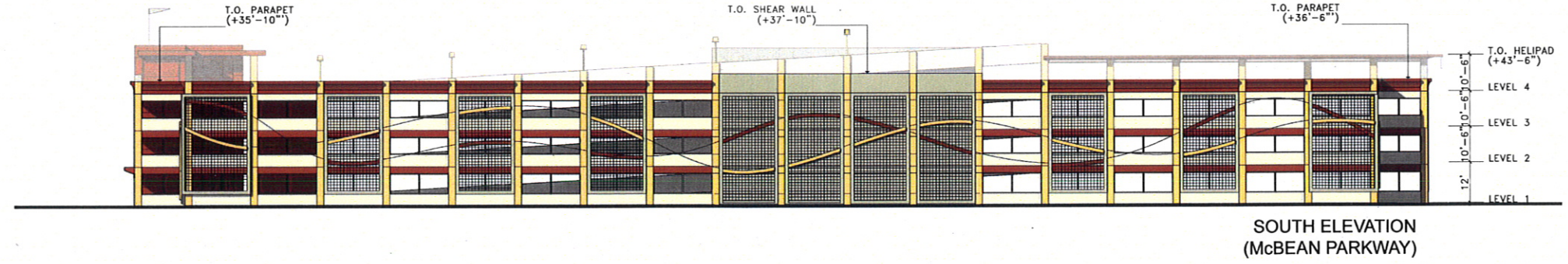
HENRY MAYO NEWHALL MEMORIAL HOSPITAL - MASTER PLAN
23845 McBean Parkway, Santa Clarita, CA 91355

SWA #: 060307 NOVEMBER 19, 2008



ARCHITECTS

48 east holly street
pasadena, ca 91103
tel: 626.793.9005 • fax: 626.793.9007



PS1: COLOR - BUILDING EXTERIOR ELEVATIONS

HENRY MAYO NEWHALL MEMORIAL HOSPITAL - MASTER PLAN
23845 McBean Parkway, Santa Clarita, CA 91355

SWA # 060307 NOVEMBER 19, 2008



48 east holly street
pasadena, ca 91103
tel: 626.793.9805 fax: 626.793.9807



VisionScape
IMAGERY



©VisionScapeImagery.com_2008



48 east holly street
pasadena, ca 91103
tel: 626 793 9005 • fax: 626 793 9007

VISUAL SIMULATION - KEY PLAN

HENRY MAYO NEWHALL MEMORIAL HOSPITAL - MASTER PLAN
23845 McBean Parkway, Santa Clarita, CA 91355

SWA #: 060307 NOVEMBER 19, 2008



EXISTING VIEW



PROPOSED VIEW



©VisionScapeImagery.com_2008



48 east holly street
pasadena, ca 91103
tel: 626.793.9605 • fax: 626.793.9607

VISUAL SIMULATION - VIEW 1 (WITH NEW AND EXISTING TREES AT THE TIME OF CONSTRUCTION COMPLETION FOR MOB 1 AND PS 1)

HENRY MAYO NEWHALL MEMORIAL HOSPITAL - MASTER PLAN
23845 McBean Parkway, Santa Clarita, CA 91355

SWA #: 060307 NOVEMBER 19, 2008



EXISTING VIEW



PROPOSED VIEW

VisionScape
IMAGERY



©VisionScapeImagery.com, 2008



48 east holly street
pasadena, ca 91103
tel: 626.793.6805 • fax: 626.793.9807

VISUAL SIMULATION - VIEW 1 (LANDSCAPE: 15 YEAR GROWTH)

HENRY MAYO NEWHALL MEMORIAL HOSPITAL - MASTER PLAN
23845 McBean Parkway, Santa Clarita, CA 91355

SWA #: 060307 NOVEMBER 19, 2008