



EXISTING VIEW



PROPOSED VIEW

VisionScape
IMAGERY



©VisionScapeImagery.com, 2008



ARCHITECTS

48 east holly street
pasadena, ca 91103
tel: 626.793.9605 - fax: 626.793.9607

VISUAL SIMULATION - VIEW 1 (LANDSCAPE: 25 YEAR GROWTH)

HENRY MAYO NEWHALL MEMORIAL HOSPITAL - MASTER PLAN
23845 McBean Parkway, Santa Clarita, CA 91355

SWA #: 060307 NOVEMBER 19, 2008



EXISTING VIEW



PROPOSED VIEW

VisionScape
IMAGERY



©VisionScapeImagery.com_2008



48 east holly street
pasadena, ca 91103
tel: 626.793.9805 • fax: 626.793.9807

VISUAL SIMULATION - VIEW 2 (WITH NEW AND EXISTING TREES AT THE TIME OF CONSTRUCTION COMPLETION FOR THE INPATIENT BUILDING)

HENRY MAYO NEWHALL MEMORIAL HOSPITAL - MASTER PLAN
23845 McBean Parkway, Santa Clarita, CA 91355

SWA #: 060307 NOVEMBER 19, 2008



EXISTING VIEW



PROPOSED VIEW

VisionScape
IMAGERY



©VisionScapeImagery.com, 2008



48 east holly street
pasadena, ca 91103
tel: 626.793.9005 - fax: 626.793.9007

VISUAL SIMULATION - VIEW 2 (LANDSCAPE: 15 YEAR GROWTH)

HENRY MAYO NEWHALL MEMORIAL HOSPITAL - MASTER PLAN
23845 McBean Parkway, Santa Clarita, CA 91355

SWA #: 060307 NOVEMBER 19, 2008



EXISTING VIEW



PROPOSED VIEW



©VisionScapeImagery.com, 2008



48 east holly street
pasadena, ca 91103
tel: 626.793.9805 • fax: 626.793.9807

VISUAL SIMULATION - VIEW 2 (LANDSCAPE: 25 YEAR GROWTH)

HENRY MAYO NEWHALL MEMORIAL HOSPITAL - MASTER PLAN
23845 McBean Parkway, Santa Clarita, CA 91355

SWA #: 060307 NOVEMBER 19, 2008



EXISTING VIEW



PROPOSED VIEW

VISUAL SIMULATION - VIEW 3 (WITH NEW AND EXISTING TREES AT THE TIME OF CONSTRUCTION COMPLETION FOR MOB 3)

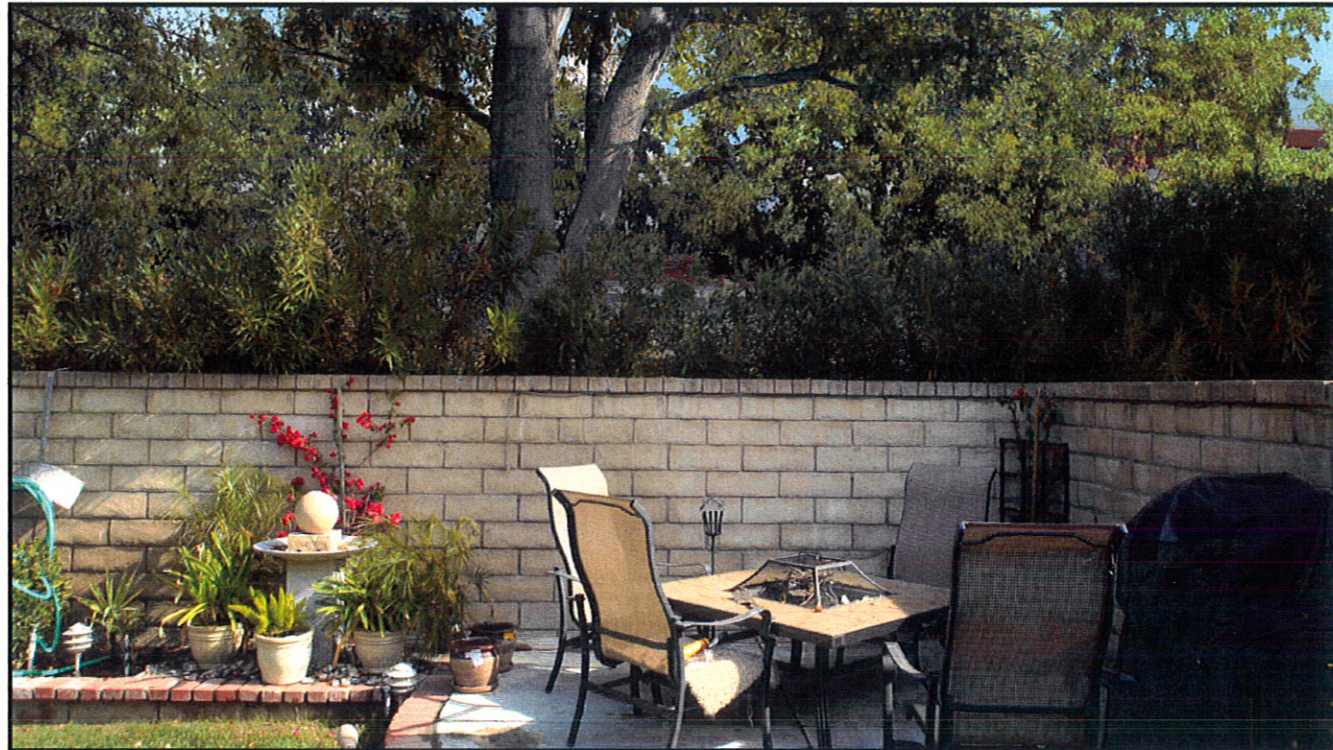
HENRY MAYO NEWHALL MEMORIAL HOSPITAL - MASTER PLAN
23845 McBean Parkway, Santa Clarita, CA 91355

SWA #. 060307 NOVEMBER 19, 2008





EXISTING VIEW



PROPOSED VIEW

VisionScape
IMAGERY



©VisionScapeImagery.com, 2008



48 east holly street
pasadena, ca 91103
tel: 626.793.9005 • fax: 626.793.9007

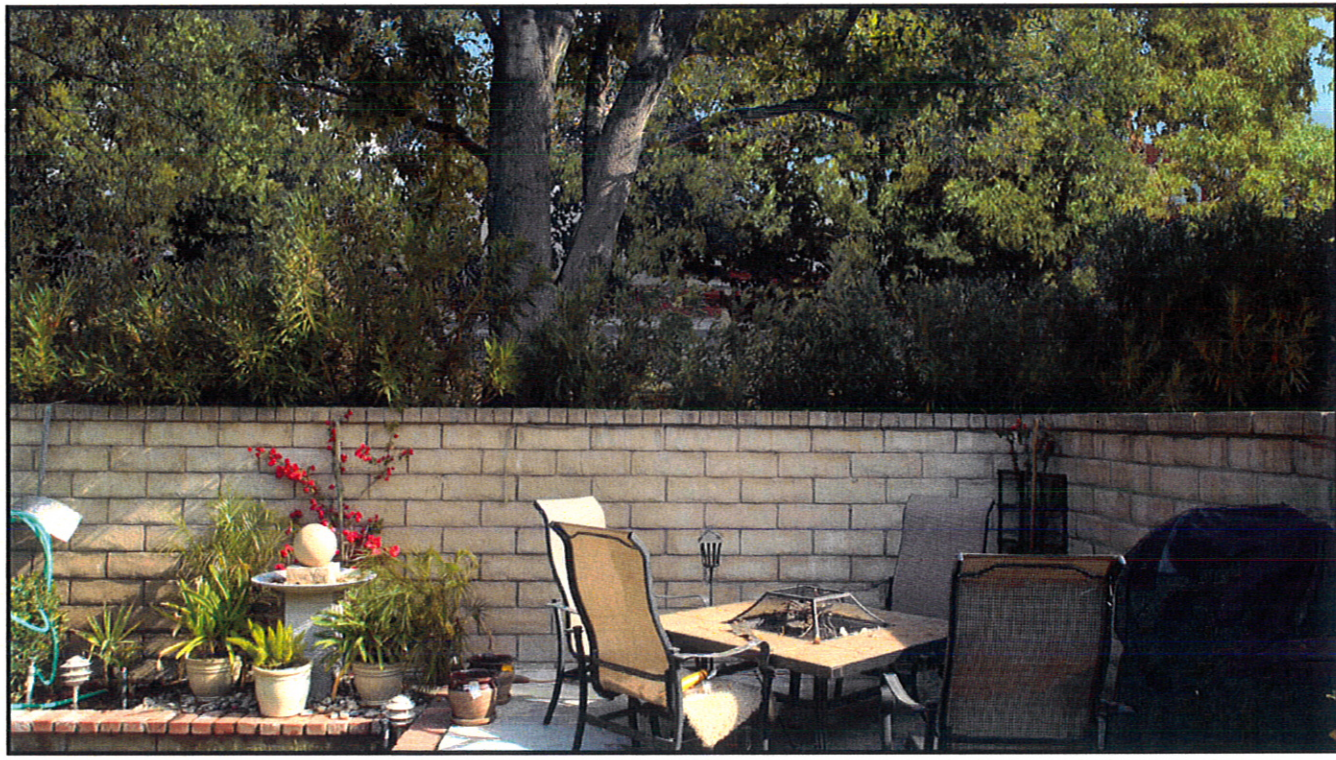
VISUAL SIMULATION - VIEW 3 (LANDSCAPE: 15 YEAR GROWTH)

HENRY MAYO NEWHALL MEMORIAL HOSPITAL - MASTER PLAN
23845 McBean Parkway, Santa Clarita, CA 91355

SWA #: 060307 NOVEMBER 19, 2008



EXISTING VIEW



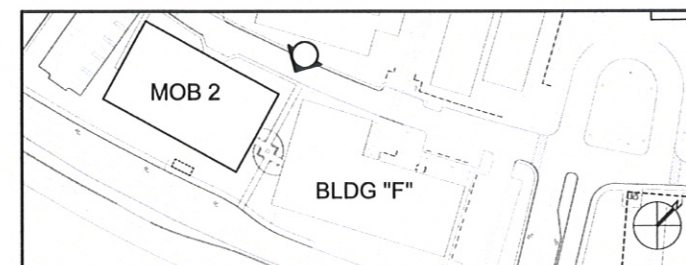
PROPOSED VIEW

VISUAL SIMULATION - VIEW 3 (LANDSCAPE: 25 YEAR GROWTH)

HENRY MAYO NEWHALL MEMORIAL HOSPITAL - MASTER PLAN
23845 McBean Parkway, Santa Clarita, CA 91355

SWA #: 060307 NOVEMBER 19, 2008





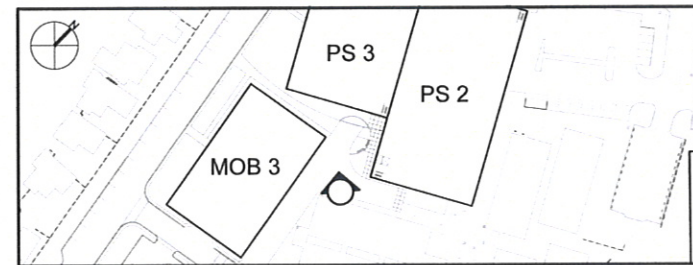
LANDSCAPE TRELLIS (AT MOB 2 AND BUILDING F): PERSPECTIVE

HENRY MAYO NEWHALL MEMORIAL HOSPITAL - MASTER PLAN
 23845 McBean Parkway, Santa Clarita, CA 91355

SWA #: 060307 NOVEMBER 19, 2008



48 east holly street
 pasadena, ca 91103
 tel: 626.793.9805 fax: 626.793.9807



PEDESTRIAN PLAZA (AT MOB 3, PS 2 AND PS 3): PERSPECTIVE

HENRY MAYO NEWHALL MEMORIAL HOSPITAL - MASTER PLAN
 23845 McBean Parkway, Santa Clarita, CA 91355

SWA #. 060307 NOVEMBER 19, 2008



ARCHITECTS

48 east holly street
 pasadena, ca 91103
 tel: 626.793.9805 • fax: 626.793.9807